



Maxforce[®]

FLY SPOT BAIT

ACTIVE INGREDIENT:

Imidacloprid, 1-[(6-Chloro-3-pyridinyl)
methyl]-N nitro-2 imidazolidinimine 10.0%
Z-9-Tricosene 0.1%

OTHER INGREDIENTS:..... 89.9%

TOTAL: 100.0%

EPA Reg. No. 432-1455

EPA Est. No. 33967-NJ-1

STOP - Read the label before use.

Keep out of reach of children.

CAUTION

See Back Panel for First Aid Instructions and
Booklet for Complete Precautionary Statements
and Directions for Use.

For **MEDICAL** and **TRANSPORTATION**
Emergencies **ONLY** Call 24 Hours A Day

1-800-334-7577

For **PRODUCT USE** Information Call

1-800-331-2867

Net Contents

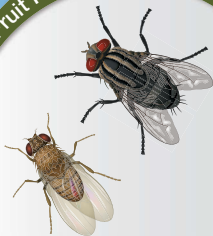
1 Lb (.45 kg)

81732019

81718326C

170725AV1

Fruit Flies • House Flies



FIRST AID

If swallowed:	<ul style="list-style-type: none">• Call a poison control center or doctor immediately for treatment advice.• Have person sip a glass of water if able to swallow.• Do not induce vomiting unless told to by a poison control center or doctor.• Do not give anything by mouth to an unconscious person.
If on skin or clothing:	<ul style="list-style-type: none">• Take off contaminated clothing.• Rinse skin immediately with plenty of water for 15 to 20 minutes.• Call a poison control center or doctor for treatment advice.
If in eyes:	<ul style="list-style-type: none">• Hold eye open and rinse slowly and gently with water for 15 to 20 minutes. Remove contact lenses, if present, after the first 5 minutes, then continue rinsing eye.• Call a poison control center or doctor for treatment advice.

In case of emergency call toll free the Bayer Environmental Science Emergency Response Telephone No. 1-800-334-7577. Have the product container or label with you when calling a poison control center or doctor or going for treatment.

Note To Physician: No specific antidote is available. Treat the patient symptomatically.

PRECAUTIONARY STATEMENTS

HAZARDS TO HUMANS AND DOMESTIC ANIMALS

CAUTION: Harmful if swallowed. Wash thoroughly with soap and water after handling and before eating, drinking, chewing gum, using tobacco, or using the toilet. Wear long-sleeved shirt and long pants, socks, and shoes.

ENVIRONMENTAL HAZARDS

This product is highly toxic to aquatic invertebrates.

Do not apply directly to water, or to areas where surface water is present or to intertidal areas below the mean high water mark. Do not contaminate water when disposing of equipment washwaters or rinseate. This product is highly toxic to bees exposed to direct treatment or residues on blooming crops or weeds. Do not apply this product or allow it to drift to blooming crops or weeds if bees are visiting the treatment area. This chemical has properties and characteristics associated with chemicals detected in groundwater. The use of this chemical in areas where soils are permeable, particularly where the water table is shallow, may result in groundwater contamination.

PRODUCT FACTS

- Contains a specially formulated mixture of attractants.
- Controls house flies resistant to organophosphates, carbamates, and pyrethroid insecticides. This product also controls fruit flies. Applications of this product can aid in suppression of psychodid and phorid flies.

MAXFORCE® FLY SPOT BAIT

- A bait that is consumed by listed flies.
- Easy to apply
- Outdoor residual efficacy up to 14 days unless the bait is completely consumed prior.
- In animal facilities and protected areas, residual efficacy can last up to 6 weeks unless the bait is completely consumed.
- Contains the attractant muscalure
- Contains 2 powerful attractants designed to lure listed flies to their death.
- Contains Bitrex® bittering agent.

WHERE TO APPLY

- In and around agricultural livestock production facilities, including: poultry houses, turkey and chicken houses, cattle, sheep and goat facilities, feedlots, dairy barns, swine confinement buildings, dog kennels, and horse stables.
- Around the outside of commercial and residential structures, or partly enclosed or protected areas
- In non-food/feed areas of commercial facilities

HOW TO APPLY

- Mix in water and spray or paint on surfaces.

COVERAGE

- Use 16 oz of product in 1 gallon of finished spray to treat surfaces where listed flies may rest in buildings with 2,000 sq ft of floor space.

RE-APPLY

- Re-apply as needed, but not before 7 days.

QUESTIONS??



- For questions or comments, call toll-free 1-800-331-2867

DIRECTIONS FOR USE

It is a violation of Federal law to use this product in a manner inconsistent with its labeling.

IMPORTANT: Read entire label before using this product.

Restrictions

- Do not apply bait on surfaces accessible to children or pets.
- Do not apply bait in areas where food animals can ingest product.
- Do not allow bait to come in contact with food or water.
- Do not apply to milking equipment at dairy facilities.

- Do not apply inside food processing or manufacturing facilities.
- Do not apply in classrooms or patient rooms.

Best Management Practices

- Use the bait as part of an overall Integrated Pest Management program.
- Use proper sanitation and manure management.
- Use environmental controls, such as proper light management.
- Consult with cooperative extension service in your state for advice on listed fly management practices.

Product Information

This product is a bait formulated to control listed flies in rural and urban environments, in animal confinement areas (e.g., cattle, poultry, swine), in commercial establishments, and outdoors in residential areas. The product can be used as a spray for treatment of surfaces, such as stable walls or waste containers, or it can be used as a paint-on application to walls and other surfaces such as pillars and compartment walls.

There is no need to spray the complete surface because this bait will attract pests to the treated area. Begin applications at the start of the season before listed fly populations have reached their peak.

Apply the product to many locations throughout the structure or facility. Spray the product on surfaces where listed flies tend to rest.

Begin applications at the start of the season before listed fly populations have reached their peak.

Mixing Directions and Use Rates

For spray applications, add 16 ounces of this product to one gallon of water and agitate until completely mixed. One gallon of finished spray will treat 1,000 sq ft of surfaces where listed flies may rest.

For paint-on applications, add 8 ounces of this product to 8 ounces of water (approximately 1 cup), and mix to desired consistency for results. Apply this mixture in narrow bands up to 6 inches wide on suitable surfaces where listed flies may rest. Do not apply this product at a rate exceeding 8 ounces for every 1,000 sq ft of floor space.

Application equipment

For spray applications, apply as a coarse fan or cone spray. Apply solution at a low pressure not to exceed 20 psi. Flush spray equipment with water to prevent clogging.

For paint-on applications, use a brush or roller paint applicator to apply solution to surfaces. Clean application and mixing equipment with water after application.

How and where to apply

FOR USE IN broiler houses, turkey houses, caged layer houses, feed-lots, dairy barns, swine confinement buildings, horse stables, kennels, and other animal confinement facilities where listed flies tend to be a nuisance or a health hazard.

Spray application

Spray diluted product where listed flies aggregate: on walls, around windows, on surfaces of pillars and other structures, etc. Apply product in areas of 3 to 12 sq ft where listed flies tend to rest. If treating areas 10 sq. ft. in size, you can apply up to 50 such bait areas in a building with 1,000 sq ft of floor space without exceeding the limit of 8 ounces of product for a building of this size.

Paint on application.

Paint the product in small bands up to 6 inches wide, or more, on places where listed flies aggregate. Apply this product at a rate of 8 ounces for every 1,000 sq ft of floor space.

Residual efficacy in animal facilities.

Residual efficacy in animal facilities is dependent on the sanitary conditions and listed fly pressure level, as well as on the quality and cleanliness of the surfaces treated.

Apply as soon as listed fly pressure exceeds acceptable threshold levels to avoid population build up. Re-apply as needed, typically at 4 to 6 week intervals.

When spraying surfaces, care must be taken only to spray places out of reach of the animals. Do not spray directly on animals, feed and drinking supplies nor on milking equipment. This also applies to empty pens due to be re-stocked within the next few weeks. Do not treat surfaces that people frequently contact. Avoid contact with sprayed surfaces until dry.

FOR USE IN OTHER AREAS such as non-food/non-feed areas of commercial food handling establishments, restaurants, and dining areas, residential backyards, on and around dumpsters and trash collection areas, storage facilities, dog kennels, zoos, animal rearing facilities, schools, hospitals, nursing homes, offices, marinas, and other locations where listed flies tend to aggregate and are a nuisance or a health hazard.

Spray application

Spray diluted product where listed flies aggregate: on walls, around windows, on surfaces of dumpsters or trash collection bins, etc. For best results, apply product on areas of 3 to 12 sq ft where listed flies tend to rest.

If treating areas 10 sq ft in size, you can apply up to 50 such bait areas in a building with 1,000 sq ft of floor space without exceeding the limit of 8 ounces of product for a building of this size.

continued

continued

Paint on applications

Paint the product in small bands up to 6 inches wide, or more, on places where listed flies aggregate. Apply this product at a rate of 8 ounces for every 1,000 sq ft of floor space.

Food/Feed Handling Establishments

Applications in food/feed handling establishments are permitted **ONLY** in non-food/non-feed areas. Non-food/non-feed areas include garbage rooms, lavatories, entries and vestibules, offices, locker rooms, machine rooms, boiler rooms, mop closets and storage (after packaging, canning or bottling).

Food/feed handling establishments are defined as places other than private residences in which exposed food/feed is held, processed, prepared or served. Included also are areas for receiving, storing, packing (canning, bottling, wrapping, boxing), preparing, edible waste storage and enclosed processing systems (mills, dairies, edible oils, syrups) of food.

Serving areas, when food is exposed and the facility is in operation, are also considered food/feed areas. However, applications of this product may be made in serving areas **ONLY** while the facility is not in operation, and provided exposed food has been covered, or removed from the area being treated prior to application. These "spot" applications may cover no more than 2 sq ft per treated area, may not be spaced closer than 10 ft apart, and should be a minimum of 6 feet above floor level.

Contamination of food or food contact surfaces must be avoided. Do not apply this product to any food, food packaging, or any food contact surfaces.

Applications of this product may leave a visible residue or discolor some surfaces. Before treating, it is advisable to test application in a small inconspicuous area.

STORAGE AND DISPOSAL

Do not contaminate water, food, or feed by storage or disposal.

Pesticide Storage:

Store in a cool, dry place and in such a manner as to prevent cross contamination with other pesticides, fertilizers, food, or feed. Store in original containers and out of the reach of children, preferably in a locked storage area. Handle and open container in a manner as to prevent spillage.

Pesticide Disposal:

Wastes resulting from the use of this product may be disposed of on site or at an approved waste disposal facility.

Container Handling:

Completely empty container. Non-refillable container. Do not reuse or refill this container. Offer for recycling, if available. Triple rinse container (or equivalent) promptly after emptying. Triple rinse as follows: Empty the remaining contents into application equipment or a mix tank. Fill the container 1/4 full with water and recap. Shake for 10 seconds. Pour rinsate into application equipment or a mix tank or store rinsate for later use or disposal. Drain for 10 seconds after the flow begins to drip. Repeat this procedure two more times. Dispose of container at an approved waste disposal facility or by incineration if allowed by state and local authorities. Do not use container in connection with food, feed, or drinking water.

Spills:

If the container is leaking or material is spilled, carefully sweep up spilled bait and wash exposed area. In spill or leak incidents, keep unauthorized people away.

You may contact the Bayer Environmental Science Emergency Response Team for decontamination procedures or any other assistance that may be necessary. The Bayer Environmental Science Emergency Response Telephone No. is 1-800-334-7577.

IMPORTANT: READ BEFORE USE

Read the entire Directions for Use, Conditions, Disclaimer of Warranties and Limitations of Liability before using this product. If terms are not acceptable, return the unopened product container at once.

By using this product, user or buyer accepts the following Conditions, Disclaimer of Warranties and Limitations of Liability.

CONDITIONS: The directions for use of this product are believed to be adequate and must be followed carefully. However, it is impossible to eliminate all risks associated with the use of this product. Crop injury, ineffectiveness or other unintended consequences may result because of such factors as weather conditions, presence of other materials, or the manner of use or application, all of which are beyond the control of Bayer CropScience LP. All such risks shall be assumed by the user or buyer.

DISCLAIMER OF WARRANTIES: TO THE EXTENT CONSISTENT WITH APPLICABLE LAW, BAYER CROPSCIENCE LP MAKES NO OTHER WARRANTIES, EXPRESS OR IMPLIED, OF MERCHANTABILITY OR OF FITNESS FOR A PARTICULAR PURPOSE OR OTHERWISE, THAT EXTEND BEYOND THE STATEMENTS MADE ON THIS LABEL. No agent of Bayer CropScience LP is authorized to make any warranties beyond those contained herein or to modify the warranties contained herein. TO THE EXTENT CONSISTENT WITH APPLICABLE LAW, BAYER CROPSCIENCE LP DISCLAIMS ANY LIABILITY WHATSOEVER FOR SPECIAL, INCIDENTAL OR CONSEQUENTIAL DAMAGES RESULTING FROM THE USE OR HANDLING OF THIS PRODUCT.

LIMITATIONS OF LIABILITY: TO THE EXTENT CONSISTENT WITH APPLICABLE LAW, THE EXCLUSIVE REMEDY OF THE USER OR BUYER FOR ANY AND ALL LOSSES, INJURIES OR DAMAGES RESULTING FROM THE USE OR HANDLING OF THIS PRODUCT, WHETHER IN CONTRACT, WARRANTY, TORT, NEGLIGENCE, STRICT LIABILITY OR OTHERWISE, SHALL NOT EXCEED THE PURCHASE PRICE PAID, OR AT CROPSCIENCE LP'S ELECTION, THE REPLACEMENT OF PRODUCT.

Bayer (reg'd), the Bayer Cross (reg'd) and MAXFORCE® are registered trademarks of Bayer.

Bayer

Produced for:
Bayer Environmental Science
A Division of Bayer CropScience LP
2 T. W. Alexander Drive
Research Triangle Park, NC 27709



Maxforce[®]

FLY SPOT BAIT

ACTIVE INGREDIENT:

Imidacloprid, 1-[(6-Chloro-3-pyridinyl)methyl]-N nitro-2 imidazolidinimine	10.0%
Z-9-Tricosene	0.1%
OTHER INGREDIENTS:	89.9%

TOTAL: 100.0%

EPA Reg. No. 432-1455

EPA Est. No. 33967-NJ-1

**STOP - Read the label before use.
Keep out of reach of children.**

CAUTION

See Back Panel for First Aid Instructions and Booklet for Complete Precautionary Statements and Directions for Use.

STORAGE AND DISPOSAL

Do not contaminate water, food, or feed by storage or disposal.

Pesticide Storage:

Store in a cool, dry place and in such a manner as to prevent cross contamination with other pesticides, fertilizers, food, or feed. Store in original containers and out of the reach of children, preferably in a locked storage area. Handle and open container in a manner as to prevent spillage.

Pesticide Disposal:

Wastes resulting from the use of this product may be disposed of on site or at an approved waste disposal facility.

Container Handling:

Completely empty container. Non-refillable container. Do not reuse or refill this container. Offer for recycling, if available. Triple rinse container (or equivalent) promptly after emptying. Triple rinse as follows: Empty the remaining contents into application equipment or a mix tank. Fill the container 1/4 full with water and recap. Shake for 10 seconds. Pour rinsate into application equipment or a mix tank or store rinsate for later use or disposal. Drain for 10 seconds after the flow begins to drip. Repeat this procedure two more times. Dispose of container at an approved waste disposal facility or by incineration if allowed by state and local authorities. Do not use container in connection with food, feed, or drinking water.

Net Contents

1 Lb (.45 kg)

81732019

81718326C 170725AV1