



Proxy®

Product information sheet

- // Active Ingredient: Ethephon
- // Formulation: Soluble liquid
- // Signal Word: Danger
- // Activity: Plant growth regulator

Best Uses

- // Suppresses seedheads in *Poa annua*
- // Suppress the growth of labeled cool-season grasses

Attributes

- // Foliarly absorbed, and is most effective on actively growing healthy turf
- // Rainfast within 2 hours
- // Promotes turf that is denser, tighter-knit and more playable
- // Seedhead suppression plus improved turf quality when tank-mixed with Stressgard® - containing products or Primo Maxx®

Key Strengths

- // *Poa annua* seedhead suppression
- // Regulates growth of desirable grasses in cool-season turf, especially roughs and tall grass

How to Apply

- // For best results, apply in sufficient volume of water to provide uniform coverage
- // For maximum performance, delay mowing until the day after application
- // For optimum control of *Poa annua*, make first application in the fall when mowing slows, followed by at least two spring applications
- // A period of 2-3 weeks after application is required for maximum performance
- // Repeat applications are needed on *Poa annua*, but wait a minimum of two weeks after the previous application
- // Follow other general recommendations and precautions on the label and in Green Solutions Update: Managing Seedheads in Annual Bluegrass

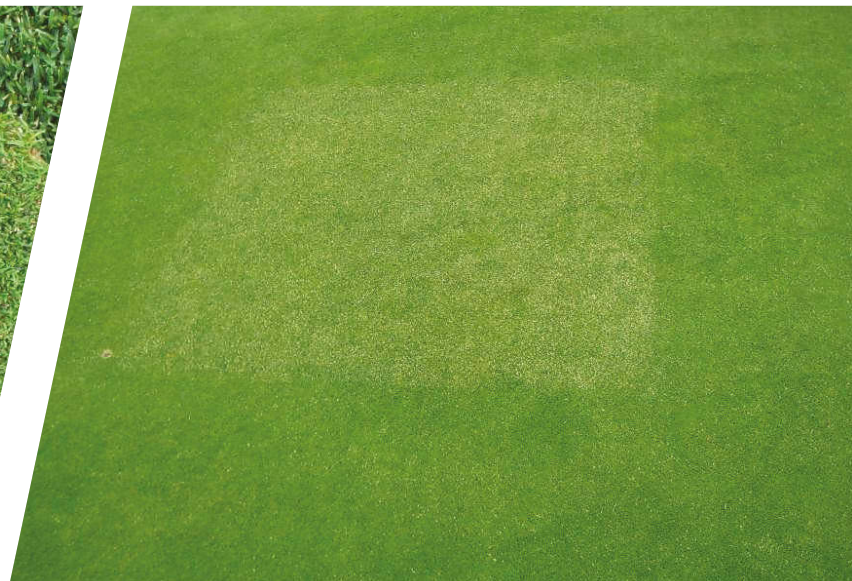


Poa annua

Application	Sites	Rate (per 1,000 sq ft)	Spray Vol. (per 1,000 sq ft)
Poa annua seedhead suppression: Reapplication interval: 2 weeks or greater for all labeled grasses	Golf course turf including greens, tees, fairways and roughs Commercial turfgrasses including bentgrass, Kentucky bluegrass, perennial ryegrass, tall and fine fescue	5.0 fl oz	1.0 - 2.0 gal
Turfgrass growth regulation reapplication intervals: // Kentucky bluegrass - 7 weeks // Perennial ryegrass - 7 weeks // Tall and fine fescue - 4 weeks // Bentgrass - 4 weeks	Golf course turf including greens, tees, fairways and roughs Commercial turfgrasses including bentgrass, Kentucky bluegrass, perennial ryegrass, tall and fine fescue	5.0 fl oz	1.0 - 2.0 gal



Close-up of plugs from an untreated and treated area respectively. Seedhead suppression results in healthier plants and improved turf quality. (Bayer)



Proliferation of annual bluegrass seedhead in an untreated area on a golf course putting green. (Bayer)

www.EnvironmentalScience.Bayer.US | [@BayerGolf](https://twitter.com/BayerGolf)



ALWAYS READ AND FOLLOW LABEL INSTRUCTIONS
Bayer Environmental Science, a Division of Bayer CropScience LP, 5000 CentreGreen Way, Suite 400, Cary, NC 27513. For additional product information, call toll-free 1-800-331-2867. Not all products are registered in all states. Bayer, the Bayer Cross, Proxy and Stressgard are registered trademarks of Bayer. Primo Maxx is a registered trademark of Syngenta © 2019 Bayer CropScience LP. ES-1018-PRX-444-P-R1