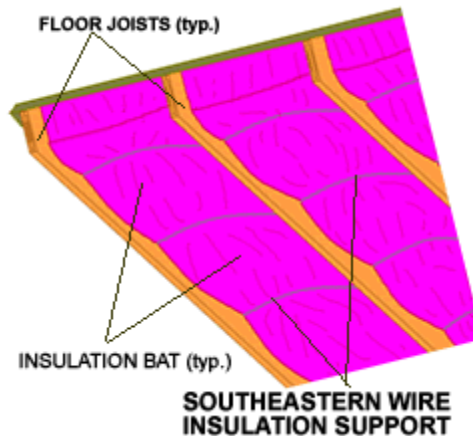


Southeastern Wire Fabricators, Inc.

271 Williams Hill Road
Hemingway, SC 29554

Specification Papers – 16” Insulation Supports



Materials:

Our Insulation Supports are cut from 13 gauge carbon spring steel wire.

Dimensions:

16” Insulation Supports are cut to be fifteen and one half inches long to support a 16” on-center floor joist spacing. All of our Insulation Supports are approximately 2.3 millimeters in diameter. The angled tips are cut into a 45° point.

Packaging:

16” Insulation Supports are packaged in boxes of 500 pieces.

Purpose:

Insulations Supports are cut strips of wire used to hold insulation in place.

Performance Ranges:

Insulation Supports are designed to be used with wooden joists, measured on center starting 4” from end. Then using one support every 12” to 16”.