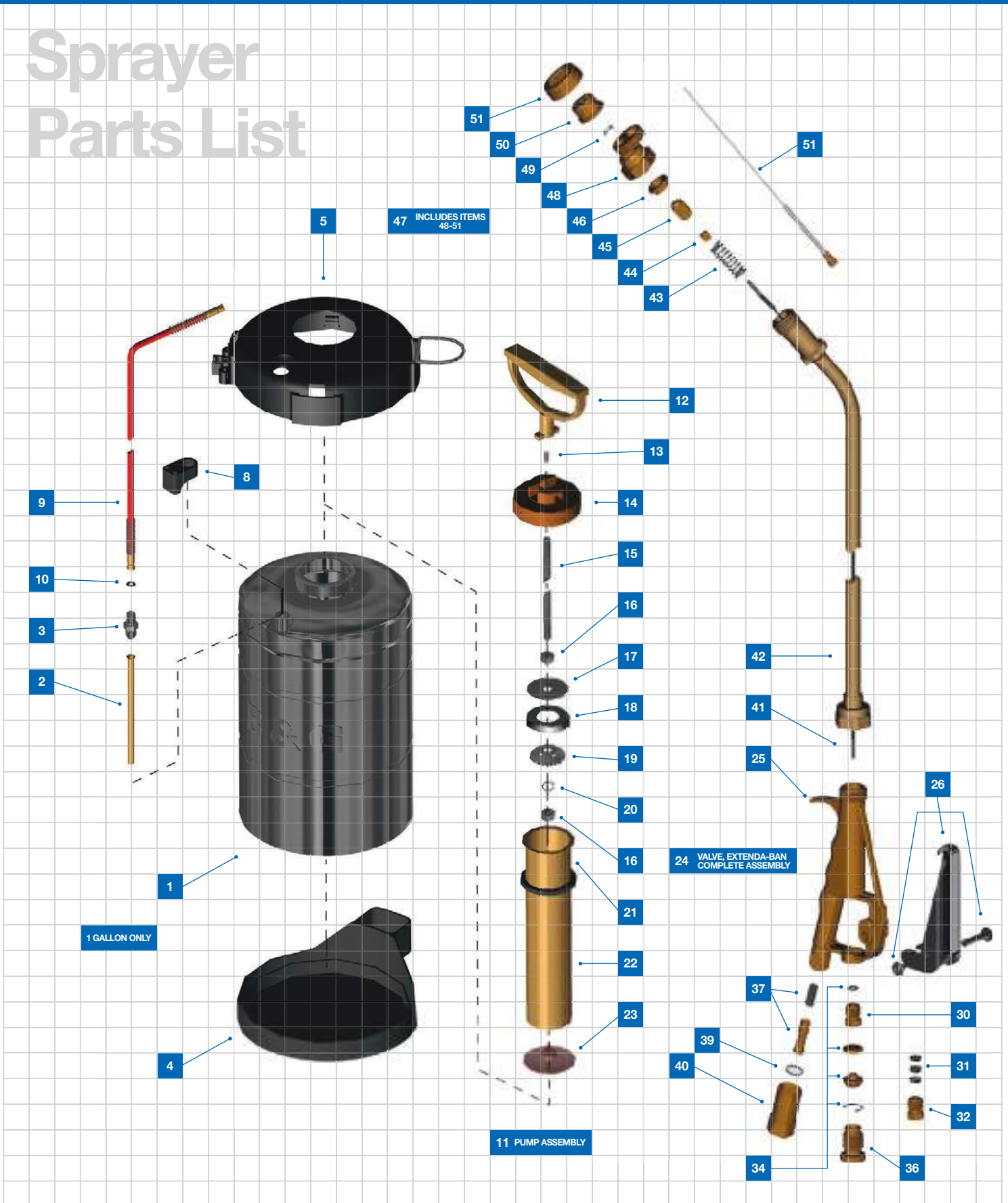


# Sprayer Parts List



| ITEM# | PART #     | ORDER #  | DESCRIPTION                        |
|-------|------------|----------|------------------------------------|
| 1     | T-50       | 22024800 | Tank (1/2 Gallon)                  |
|       | T-100      | 22025000 | Tank (1 Gallon)                    |
|       | T-200      | 22025100 | Tank (2 Gallon)                    |
|       | T-300      | 22025200 | Tank (3 Gallon)                    |
|       | T-500      | 22025250 | Tank (5 Liter)                     |
| 2     | HS-297     | 22025600 | Tube, Siphon (1/2 Gallon)          |
|       | OS-297     | 22025700 | Tube, Siphon (1 Gallon)            |
|       | TS-297     | 22025800 | Tube, Siphon (2 Gallon)            |
|       | THS-297-01 | 22025901 | Tube, Siphon (3 Gallon)            |
|       | FS-297     | 22025950 | Tube, Siphon (5 Liter)             |
| 3     | HA-298     | 22025300 | Adapter, Hose                      |
| 4     | TB-1       | 22049477 | Bottom, Tank (1 Gallon Only)       |
| 5     | TT-1       | 22049476 | Top, Tank (1 Gallon Only)          |
| 8     | 5700-H     | 22049475 | Holder, Tip (Not used with Item 5) |
| 9     | D-50       | 22030100 | Hose, 4 ft., red                   |
|       | D-51-P     | 22030400 | Washer, Hose                       |
|       | PH-265     | 22026900 | Pump Assembly (1/2 Gallon)         |
|       | PO-265     | 22027000 | Pump Assembly (1 Gallon)           |
| 11    | PF-265     | 22027125 | Pump Assembly (2 Gallon & 5 Liter) |
|       | PT-265     | 22027100 | Pump Assembly (3 Gallon)           |
|       | P-275      | 22029800 | Handle, Pump                       |
| 13    | P-276      | 22029900 | Spring, Pump Lock                  |
| 14    | P-274      | 22029700 | Cap, Pump                          |
| 15    | PH-273     | 22029400 | Rod, Plunger (1/2 Gallon)          |
|       | PO-273     | 22029500 | Rod, Plunger (1 Gallon)            |
|       | PF-273     | 22029650 | Rod, Plunger (2 Gallon & 5 Liter)  |
|       | PT-273     | 22029600 | Rod, Plunger (3 Gallon)            |
| 16    | P-269-SS   | 22028250 | Nut, Plunger                       |
|       | P-272      | 22029200 | Plate, Back                        |
| 18    | NP-277     | 22029000 | Cup, Polypropylene                 |
|       | NP-271     | 22028800 | Cup, Leather                       |
| 19    | NP-270     | 22028600 | Plate, Cup Spreader                |
| 20    | P-269A     | 22028400 | Washer, Lock                       |
| 21    | P-268      | 22028000 | Gasket, Pump                       |
| 22    | PH-267     | 22027400 | Tube, Pump (1/2 Gallon)            |
|       | PO-267     | 22027500 | Tube, Pump (1 Gallon)              |
|       | PF-267     | 22027650 | Tube, Pump (2 Gallon & 5 Liter)    |

| ITEM# | PART #    | ORDER #  | DESCRIPTION                              |
|-------|-----------|----------|--|
| 22    | PT-267    | 22027600 | Tube, Pump (3 Gallon)                    |
| 23    | PV-266    | 22027200 | Valve, Check                             |
| 24    | 120       | 22042101 | Valve, Extenda-Ban 9" (less tip)         |
|       | 220       | 22042203 | Valve, Extenda-Ban 18" (less tip)        |
|       | 420       | 22042778 | Valve, Extenda-Ban 24" (less tip)        |
| 25    | VB-147    | 22044450 | Valve Body Kit                           |
| 26    | VT-140    | 22042800 | Trigger, Valve Housing, Screw            |
| 30    | PN-150-2  | 22042455 | Nut, Packing                             |
| 30A   | PN-150-1  | 22042454 | (1999 - 2000) Nut, Packing               |
| 31    | VP-151    | 22045099 | Packing, Valve                           |
| 32    | PN-150    | 22044900 | Nut, Packing (Prior to 1999)             |
| 34    | AS-148    | 22044500 | Adjusting Screw, Lock nut, Snap ring     |
| 36    | SL-162    | 22046700 | Nut, Safety Lock                         |
| 37    | MS-145-50 | 22043800 | Strainer, 50 Mesh Support, Strainer      |
| 39    | NG-146    | 22044200 | Gasket, Nylon                            |
| 40    | SA-143    | 22043400 | Housing, Strainer                        |
| 41    | VC-152    | 22045300 | Cable, Valve 9"                          |
|       | VC-153    | 22045400 | Cable, Valve 18"                         |
|       | VC-163    | 22045450 | Cable, Valve 24"                         |
| 42    | VE-154    | 22045500 | Extension, Brass 9"                      |
|       | VE-155    | 22045600 | Extension, Brass 18"                     |
| 43    | VE-164    | 22045650 | Extension, Brass 24"                     |
|       | VE-154-SS | 22045510 | Extension, Stainless Steel 9"            |
| 44    | VE-155-SS | 22045610 | Extension, Stainless Steel 18"           |
|       | VE-164-SS | 22045710 | Extension, Stainless Steel 24"           |
| 43    | VS-156    | 22045700 | Spring, Seat Stem                        |
| 44    | SSL-157   | 22045900 | Nut, Seat Stem                           |
| 45    | SS-158    | 22046100 | Stem, Seat                               |
| 46    | SP-159    | 22046300 | Gasket, Soft Seat                        |
| 47    | 5850-CC   | 22049466 | B&G 4 Way C&C Tip Assembly (Parts 48-51) |
|       | 5850      | 22049451 | Tip Assembly (No C&C)                    |
| 48    | 9751-M    | 22049300 | Holder, B&G 4 Way C&C Tip                |
| 49    | 4190      | 22034700 | Gasket, Viton®                           |
| 50    | 5800-CC   | 22049467 | Tip, B&G 4 Way C&C                       |
|       | 5800      | 22049452 | Tip only (No C&C)                        |
| 51    | 4596      | 22034500 | Retainer, Tip                            |
| 52    | 5700-B    | 22049200 | Extension, Crack & Crevice               |