

FAST CATCH

The First True IPM Rodent Station



Technical Specifications:

» **ALERT FUNCTION** The **FAST CATCH** is available with or without the alert function. The **FAST CATCH** equipped with the alert function allows the technician to easily identify stations that have activity.

» **LONG ENTRANCE CORRIDOR** The long entry corridor permits the rat to commit to the station before reaching the snap trap. This gives the rat very little room to avoid the snap trap.

» **LOW PROFILE** Rats see patterns and shapes in their environment, especially angular lines and sharp edges. They quickly distinguish a shape or a pattern that stands out or is out of place. The **FAST CATCH** station is distinctly low profile with angular and smooth rounded edges. It is a combination of shapes and thus easily blends into the normal background.

» **PRIVATE LABEL** For as little as \$.25 per station B&G can print your company information on the station.

» **SINGLE KEY ENTRY** Just push down and station unlocks. Cuts down on the service time per station.

» **HEAVY DUTY DESIGN** Built for years of service. Can withstand "stepping on" without damage to station. Extra strong "true" hinge provides for a long service life.

» **NO STEP ENTRY** For rats to enter an opening, it should be at, or close to the level of, the floor, as rats would avoid taking a step 'into' an opening. The **FAST CATCH** station provides a very low edge to enter the trap at ground level.

» **SEE-THRU OPENING** Rats are apprehensive about entering dead-end spaces, and avoid new openings in their familiar or new habitat. The **FAST CATCH** station provides a clean, see-thru opening for the rat to enter. With a snap trap in place, the opening is still relatively unobstructed.

» **MULTI-PURPOSE** The **FAST CATCH** station can be used in several ways: snap trap only, bait station only, snap trap and bait, or just use for monitoring with Non-Toxic bait. The **FAST CATCH** can quickly go from a standard bait station to a station used in an IPM program for Food Processing Plants.

For a free sample, give us a call at 800-544-8811



135 Region South Drive, Jackson, GA 30233
800-544-8811 • www.bgequip.com

FAST CATCH

The First True IPM Rodent Station



The **FAST CATCH** can be used in IPM programs for monitoring with non-toxic bait and then when activity is present a snap trap can be used for final control. It can also be utilized as a "stand alone" snap trap or rodent bait station.

The **FAST CATCH** station is available in two different models, the first is a station-only design and the second is our "Rodent Alert" Design. This Patent pending design features a "pop up" alert that will notify you that the snap trap has been triggered.

Each **FAST CATCH** Station Features:

- » Heavy Duty Poly Construction
- » Easy Open Single Lock Design
- » Reusable – Designed for years of service
- » Tamper Resistant – Lid recesses into base
- » Low Profile design for increase rodent activity
- » Fits all professional rat snap traps
- » Long entry pathways keeps the rodent hidden after catch
- » Truly flexible - Can be used in a variety of applications
- » Pop-outs in rear of station allows for attachment to pipes or any other object by use of cable ties

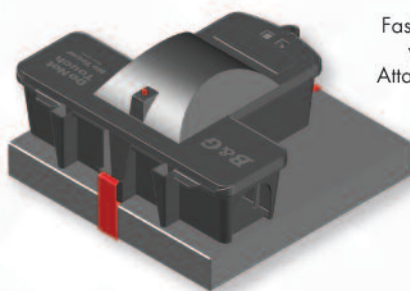
Great places to use this station:

- » Sensitive Accounts – Where Rodenticide is banned
- » Residential Accounts – Keeps rats hidden from Occupants
- » Commercial Kitchens, Restaurants and office complexes.

Can be used with Snap Traps, Bait or a combination of both.

ORDER#	DESCRIPTION
25000309	Fast Catch Station With Rodent Alert
25000308	Fast CatchStation
25000205	Extra Key Pack 15
25000260-C	Attachment System Kit
35000308	Fast Catch 6 pack with Attachment System
35000309	Fast Catch Alert 6 pack with Attachment System

RODENT STATION ATTACHMENT SYSTEM



Fast Catch shown with Rodent Attachment System



To see a video of the Attachment System, visit us on the web at www.bgequip.com

TECHNICAL SPECIFICATIONS:

- » Attaches any B&G Rodent Station to a 12" x 12" paver block
- » Installs in less than 30 seconds
- » Heavy duty metal construction
- » Economical cost
- » Patent pending design

SPECIAL FEATURES:

- » The Station Attachment System consists of 2 clamps, a metal screw and washer. It is designed for use with a 12" x 12" (1.5" thick) concrete paver, and only with B&G rodent stations.
- » Easy and economical way to secure the Fast Catch and Rodent Bait Station.
- » Holds station securely to block and is reusable.

For a free sample, give us a call at 800-544-8811



135 Region South Drive, Jackson, GA 30233
800-544-8811 • www.bgequip.com