

ARBORplugs®

The Arborplug is a technological advancement in trunk injection and a key component of the Arborjet injection methodology.



#4 Arborplug 3/8"
(070-0155) Pack of 100

Recommended for: Conifers and medium to large trees.



#3 Arborplug 9/32"
(070-0150) Pack of 100

Recommended for: Small to medium deciduous trees.

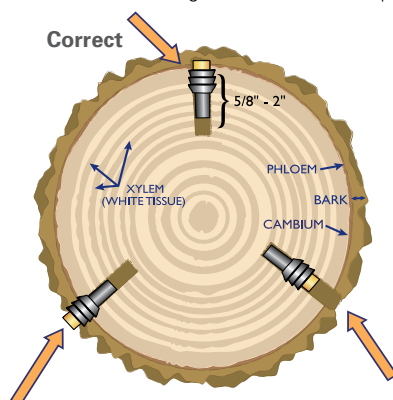
Arborplug Advantage

- Tight seal for fast, consistent injection.
- Protects the surrounding environment and the applicator from unintended product contact.
- Minimizes the number of injection sites and helps to inhibit infection

Arborplug Placement

SET CORRECTLY

- Fastest rate of uptake
- Least chance of leakage
- Best protection of the cambium
- Fastest wound closure (growth over the Arborplug)

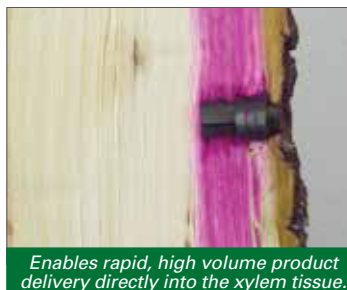


SET TOO SHALLOWLY

- Highest chance of leakage
- Higher chance of bark splitting
- Least protection of the cambium
- Slower wound closure (pushes the Arborplug out)

SET TOO DEEPLY

- Slowest rate of uptake
- Higher chance of leakage
- Deeper wound than necessary



ARBORPLUG AND VIPER NEEDLE OPTIONS

VIPER Needle

(070-0501)

Components: 4 Needles

VIPER Needle Line Extension

(070-0630)

Arborplug Setter 2-Pack

(070-0120)

Drill Bit Kits*

(070-0660) Drill Bit 2-Pack Kit #3 and #4

(070-0665) Drill Bit 2-Pack Kit #4

(070-0670) Drill Bit 2-Pack Kit #3

STINGER OPTIONS

When you don't need an Arborplug

STINGER Needle & Valve Assembly 4 Pack

(070-0336)

STINGER Needle 2 pack

(070-0620)

STINGER Needle Line Extension

(070-0640)

Drill Bit – 7/32" STINGER 2 pack *

(070-2020)

ADDITIONAL ACCESSORIES

Diameter Tape

(975-00165)

Measures tree size. 3/8" x 12' compact measuring tape instantly converts tree circumference to diameter inches (DBH).

Single TREE I.V.

(070-0022)

No accessories included.

*These items are not manufactured or produced in the USA

