

## BOTANICAL CONTROL PRODUCTS

### Eco-PM<sup>®</sup>

#### Eco-PM<sup>®</sup> Botanical Fungicide

*(20.0% Thyme, 1.0% Clove Oil)*

Eco-PM is a broad spectrum contact fungicide, derived from botanical plant oils and extracts.

**Effective for:** Powdery & Downy Mildew, Botrytis Gray Mold, Late Blight, Early Blight, Black Spot, Anthracnose, Rust, Scab, Leaf Spot, Fusarium Blight, Dollar Spot, Red Thread, Rhizoctonia Brown Patch, and Pythium Blight.

- 040-8000 32 fl. oz. Ready-to-Use
- 040-8002 8 fl. oz. Concentrate: Makes up to 5 gallons
- 040-8005 32 fl. oz. Concentrate: Makes up to 26 gallons
- 040-8020 Gallon Concentrate: Makes up to 100 gallons



### Eco-Mite<sup>+</sup>

#### Eco-Mite Plus<sup>®</sup> Botanical Insecticide Miticide

*(5.0% Rosemary, 2.5% Rosemary Oil, 2.5% Peppermint Oil, 2.5% Cottonseed Oil)*

Eco-Mite Plus is a contact miticide and insecticide, derived from botanical plant oils and extracts.

**Effective for:** Phytophagous Mites, eggs, and nymphs; Aphids, Mealybugs, Scale Crawlers, Thrips, Whiteflies, Psyllids, and other piercing-sucking insects.

- 040-7000 32 fl. oz. Ready-to-Use
- 040-7002 8 fl. oz. Concentrate: Makes up to 3 gallons
- 040-7005 32 fl. oz. Concentrate: Makes up to 13 gallons
- 040-7020 Gallon Concentrate: Makes up to 53 gallons



**SAME  
DAY  
HARVEST**

# Eco-line

## The Eco-line Difference

Eco-PM and Eco-Mite Plus are specialty blends of high quality, organically sourced, botanical oils and extracts providing higher concentrations and more effective control. Many of the oils and extracts are distilled in-house to assure quality and consistency.

- EPA Minimum Risk active ingredients allowed for use on food crops
- Formulated to be used frequently without burning
- Same day harvest

## Diseases Controlled by Eco-PM



Powdery  
Mildew



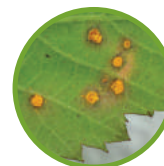
Late  
Blight



Black  
Spot



Anthrachnose



Rust

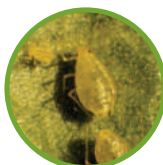
## Insects Controlled by Eco-Mite Plus



Whiteflies



Thrips



Aphids



Mealybugs



Mites