

# OPERATION GUIDE

Model #: FZPATU

*FLOWZONE*<sup>®</sup>

# INJECTOSOL™

BATTERY POWERED  
AEROSOL INJECTOR





## ATTENTION

Please read the following information carefully. User must read and understand the entire manual before operating the aerosol injector. Failure to follow instructions or improper use could lead to failure and possible serious injuries.

- **DO NOT RETURN AEROSOL INJECTOR TO STORE.** If you experience issues or have questions, contact our Support Team M-F 9am-5pm EST at 1-803-339-2500 or email support@wessol.com.
- The INJECTOSOL™ is designed for application of solvent based insecticides. These insecticides are labeled for ULV application. It is not designed for the application of residual chemicals. It may be a federal violation to use residual chemicals even though the insecticides may be labeled for crack and crevice.
- Never spray flammable, caustic, acidic, heat, pressure, or gas producing chemicals.
- Always read and follow chemical manufacturer's instructions before use with this aerosol injector as some chemicals may be hazardous when used with this aerosol injector.
- Never leave chemicals or solutions sitting in your aerosol injector after using.
- Read and follow all instructions and cautions on label of products used in this aerosol injector.
- Do not store your aerosol injector in extremely high temperatures. Heat can lead to the build-up of pressure within the aerosol injector, resulting in a possible explosion.
- Do not try to make modifications to the aerosol injector. Always use FlowZone® branded replacement parts from the manufacturer.
- Do not use batteries that are wet or have been damaged.
- Inspect aerosol injector hose, power switch, wand, and handle for damage or loose connections before each use.
- Do not lift or carry the aerosol injector by the hose, or wand.

Carry by the handle only.

- Only spray when the air is calm (no wind or air movement) to prevent chemical spray from drifting into unintended areas.
- Keep aerosol injector and all chemicals out of the reach of children.
- Remove chemicals and thoroughly clean the aerosol injector after each use. Failure to clean the aerosol injector may cause contamination of subsequent applications, will cause premature spray wear, and void the warranty.

## NOTES

- The aerosol injector may have residual water in it when first opened. This is due to quality testing every unit undergoes before leaving our factory.
- Some parts may be located under the tank lid or in the battery compartment when first assembling the aerosol injector.
- **THIS AEROSOL INJECTOR IS DESIGNED TO OPERATE WITH ONLY FLOWZONE® BRANDED BATTERIES AND ADAPTERS. ANY UNAPPROVED BRANDS COULD CAUSE SERIOUS HARM OR INJURY TO THE OPERATOR AND SERIOUS DAMAGE TO THE AEROSOL INJECTOR.**

This product contains chemicals, including lead, known to the state of California to cause birth defects and other reproductive harm.



When using chemicals, always wear protective clothing, including respiratory protection masks, gloves, eye protection, etc.



Do not dispose of Lithium-ion batteries with household waste; recycle where facilities exist.

## OPERATING

- Do not allow familiarity with products to make you careless. Remember that a single moment of carelessness is sufficient to cause serious injury.
- Always wear eye protection with side shields when handling or operating this aerosol injector. Failure to do so could result in serious injury from chemical contact or flying dirt or debris.
- The Lithium-ion battery pack can be used in temperatures down to 32°F. When operating in cold temperatures, put the battery pack in the battery compartment and use the aerosol injector in a light duty application. After about a minute the battery pack will warm up and begin operating normally.
- Always use the correct power setting for your application. Using the correct PSI and flow rate will result in a safer and more thorough treatment. For calibration resources please contact FlowZone® technical support. (Note: Always refer to local, state, and federal laws and regulations regarding your

application.)

- Do not use the aerosol injector if the power switch is not functioning correctly. Any power tool that cannot be controlled with the switch is dangerous and must be repaired.
- Remove battery before making any adjustments, changing accessories, or storing the aerosol injector. Disconnect the aerosol injector from the power source by removing the battery pack. These preventative safety measures reduce the risk of starting the aerosol injector accidentally.

## STORING

- Store aerosol injector out of reach of children and do not allow persons unfamiliar with the power tool or these instructions to operate the aerosol injector. Power tools are dangerous in the hands of untrained users.
- Maintain aerosol injectors and accessories. Check for misalignment or binding of moving parts, breakage of parts and any other condition that may affect the aerosol injector's operation.

## SAFETY

- Use the aerosol injector and accessories in accordance with these instructions, taking into consideration the working conditions and the work to be performed. Use of this aerosol injector for applications that it was not intended for could result in a hazardous situation.
- Keep handles and lift points dry, clean and free from oil and grease. Slippery handles and lift points do not allow for safe handling and control of the aerosol injector.
- Risk of fire or explosion: Never use this aerosol injector with liquids such as gasoline, ethanol, methanol, or any other flammable or gas producing chemicals. Do not use aerosol injector around sparks, flame, or smoke. Failure to adhere to these instructions may cause ignition, resulting in potential injury and damage to property.
- To reduce the risk of fire, personal

injury, and product damage from a short circuit, never immerse the aerosol injector, battery, or charger in fluids. Do not place or store aerosol injector where it could fall or be pulled into a tub or sink. Corrosive or conductive fluids, such as seawater, certain industrial chemicals, and bleach or bleach containing products, etc., can cause a short circuit.

- **Electric shock hazard:** Be careful when treating around electrical junction boxes, fuse boxes, switches etc. Injuries from electric shock can be fatal. **Never allow the nozzle tip to contact live connections.**
- Spray area must be well ventilated to avoid hazardous fume build-up. Always refer to the product label of the chemical being used for safety instructions and proper use practices.
- Avoid spraying on windy days. Spraying in windy conditions could cause chemicals to be blown onto persons, plants, or objects that are not intended to be sprayed.

**DO NOT RETURN AEROSOL INJECTOR TO STORE**, if you experience problems or have questions contact our Customer Support, M-F 9am-5pm EST at **+1 (803) 339-2500**, or email: [support@wessol.com](mailto:support@wessol.com), or find more information at [fzspray.com/pages/troubleshoot](https://fzspray.com/pages/troubleshoot).

## SAFETY CONT.

- Do not store chemicals in the tank. Chemicals can degrade seals and hoses. Drain and clean aerosol injector after each use. Failure to do so may void the warranty.
- Remove gloves before handling battery pack. Chemicals may be damaging to plastics.
- Thoroughly inspect the interior, exterior, and all components of the aerosol injector before each use. Check for cracked and deteriorated hoses, leaks, clogged nozzles and missing or damaged parts. If damaged, ensure the aerosol injector is repaired before use. Many accidents are caused by poor maintenance.
- Always remove the battery pack from the aerosol injector before performing any maintenance, storing or draining of the aerosol injector.
- Do not eat or smoke while handling or operating the aerosol injector. Refer to the product label of the chemical being used for user safety practices.
- Always use common sense and be cautious when using the aerosol injector. It is not possible to anticipate every situation that could result in a dangerous outcome. Do not use this aerosol injector if you do not understand these operating instructions or if you feel the work is beyond your capability.
- Maintain labels and nameplates. These carry important information. If unreadable or missing, contact FlowZone® Support.

**Manuals are subject to updates.  
Scan the QR code to view the  
most updated manual online!**



or visit: [www.fzspray.com/pages/operation-guides](http://www.fzspray.com/pages/operation-guides)

## REGISTER YOUR AEROSOL INJECTOR!

To take advantage of the 1-year Limited Warranty from WESSOL, LLC. Register your aerosol injector at the website below:

***[fzspray.com/pages/register](http://fzspray.com/pages/register)***

Please read and follow this manual carefully to ensure that you get the most out of your new aerosol injector. If you need assistance with the assembly or operation of your aerosol injector, please don't hesitate to contact WESSOL via the support methods below:

**fzspray.com**

**spraysquad@fzspray.com**

## THE BATTERY

These batteries have been designed to provide maximum trouble-free life. However, like all batteries, they will eventually wear out. Do not disassemble battery pack and attempt to replace the batteries. Handling of these batteries especially when wearing rings or jewelry could result in serious burns.

- Recharge only with the charger specified by FlowZone®. A charger that is suitable for one type of battery pack may create a risk of fire when used with another batter pack.
- Only use aerosol injectors specifically designated with their designated battery packs. Use of any other battery packs may create a risk of injury and fire.
- When battery pack is not in use, keep it away from other metal objects, like paper clips, coins, keys, nails, screws or other small metal objects, that can make a connection from one terminal to another. Shorting the battery terminals together may cause burns or fires.
- Under abusive conditions, liquid can be ejected from the battery; avoid contact. If contact accidentally occurs, flush with water. If liquid

contacts eyes, additionally seek medical help.

- Liquid ejected from the battery may cause irritation or burns.
- Do not use a battery pack or aerosol injector that is damaged or modified. Damaged or modified batteries may exhibit unpredictable behavior resulting in fire, explosion or risk of injury.
- Do not expose a battery pack or aerosol injector to fire or excessive temperature. Exposure to fire or temperature above 265°F (130°C) may cause explosion.
- Follow all charging instructions and do not charge the battery pack outside the temperature range specified in the instructions. Charging improperly or at a temperature outside the specified range may damage the battery and increase the risk of fire.

### STORING BATTERY PACK LONGER THAN 30 DAYS

- Store the battery pack where the temperature is below 80°F and away from moisture.
- For long-term storage, regular charging of the battery is required to maximize battery life. Check the

battery level using the indicator lights every 4 weeks. Recharge the battery if it falls below 3 bars.

- Do not allow the battery to fully discharge.

### BATTERY RECYCLING PREPARATION

- To preserve natural resources, please recycle or dispose of the batteries properly.
- This product contains Lithium-ion batteries. Local, state or federal laws may prohibit disposal of lithium-ion batteries in ordinary trash. Consult your local waste authority for information regarding available recycling and/or disposal options.

### LITHIUM-ION BATTERY PACKS

- Lithium-ion batteries deliver fade free power for their entire run time. Lithium-ion batteries will not gradually lose power due to decreasing battery charge. Instead, power form the battery

pack will drop from full to zero once the full charge has been drained from the battery. Once this happens, recharging of the battery is required.

### BATTERY PACK PROTECTION FEATURES

- Lithium-ion battery packs are designed with features that protect the lithium-ion cells and maximize battery life. If the aerosol injector stops during use, release the trigger to reset and resume operation. If the aerosol injector still doesn't work, the battery needs to be recharged.

If after 2 hours during the charging process, none of the LEDs are lit, remove the battery pack from the charger to avoid damaging the product. DO NOT insert another battery. Contact Customer Support for instructions on replacing the battery.

# CONTENTS

<b>THE INJECTOSOL™: INTRODUCTION</b>	<b>7</b>
<b>AEROSOL INJECTOR DIAGRAM</b>	<b>8</b>
<b>WHAT'S INSIDE</b>	<b>9</b>
<b>GETTING STARTED</b>	<b>10</b>
Equipment setup	
<b>OPERATION</b>	<b>12</b>
Preparing to spray	
<b>AFTERCARE</b>	<b>13</b>
Equipment shut down	
<b>QUICKSWAP™</b>	<b>14</b>
Changing out battery adapters	
<b>MAINTENANCE</b>	<b>16</b>
Caring for your aerosol injector	
<b>TROUBLESHOOTING</b>	<b>19</b>
<b>ACCESSORIES &amp; PARTS</b>	<b>21</b>
<b>WARRANTY</b>	<b>22</b>



## THE INJECTOSOL™: INTRODUCTION

In the hands of a trained pest control technician (PCO), the INJECTOSOL™ Battery Aerosol Injector is a precision Ultra Low Volume (ULV) generator tool.

The application of the INJECTOSOL™ places ULV insecticide into cracks, crevices, and deep voids. This application provides for direct kill and flush of harborage areas. The INJECTOSOL™ is part of a complete Integrated Pest Management (IPM) program. This system should be operated in conjunction with the industry standards and guidelines. This will yield better results than space treatments or residuals alone.

### FlowZone® INJECTOSOL™ Specifications

Model Number	FZPATU	Pump Type	Brushed diaphragm compression
Battery Type	Lithium-ion	Tank Capacity	26 oz.
Battery Voltage	18V	Pressure	13-28 psi
Battery Capacity	5.2Ah	Operating Range	13-24 PSIG
Battery Charging Time	1.5 hours	Continuous Spray Time	70+ minutes
Battery Cycle Life	1,000 charge cycles	Flow Rate	1.33 oz./min
Battery Charger	21V/2.5A	Output/Charge	180 oz. (6 tanks)

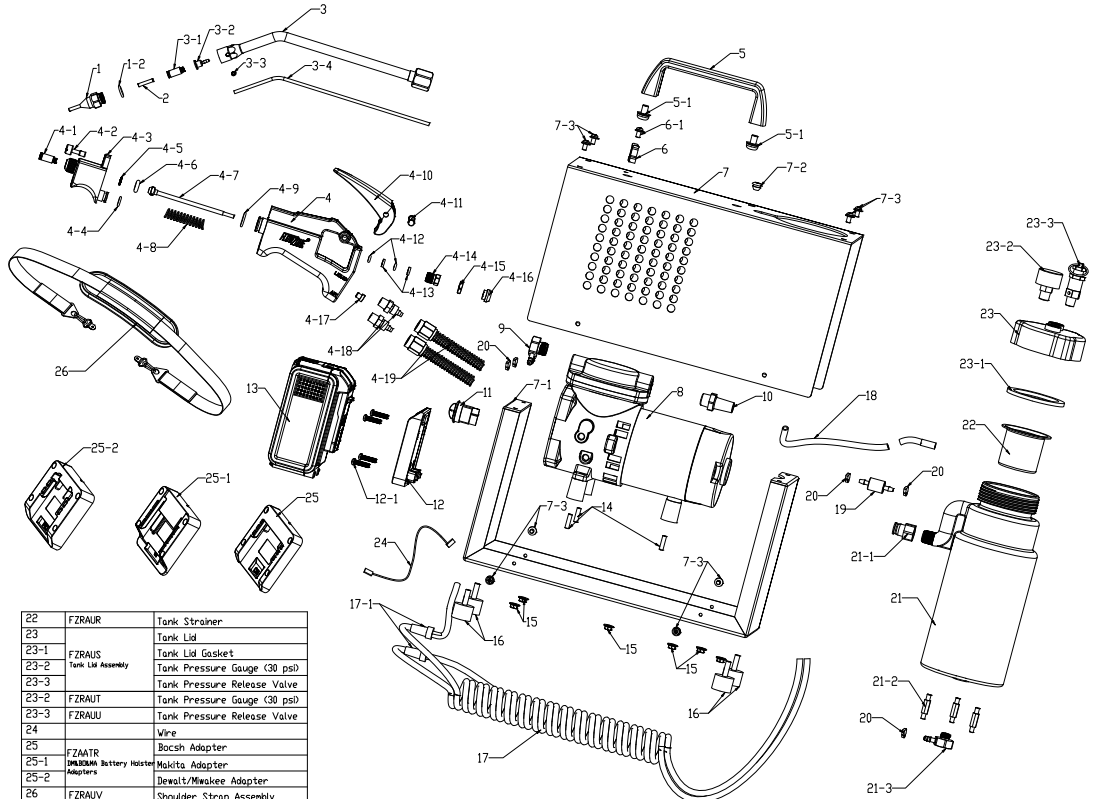


**NOTE:** The INJECTOSOL™ Aerosol Injector system is designed for application of solvent based insecticides. **It is not designed for the application of residual chemicals.** It may be a federal violation to use residual chemicals in an INJECTOSOL™ even though the chemicals may be labeled for crack and crevice. If you have any questions regarding the appropriate chemicals to use please contact the manufacturer of the chemical or WESSOL Support.

FZPATU

**AEROSOL INJECTOR DIAGRAM**  
& Replacement Parts

1	FZRAUG	Stainless Steel Injection Nozzle
1-1	FZRAUG	Stainless Steel Injection Nozzle Assembly
2	FZRAUH	Brass Atomization Jet
3		9 Inch Wand
3-1	FZRAUI	Quick Release Nose 1/8
3-2	FZRAUI	Stainless Steel Injection Wand Assembly (9-3)
3-3		Set Screw
3-4		1/8 Tube
3-1	FZRAUI	Quick Release Nose 1/8
3-2	FZRAUI	Quick Release Atomization Jet
4		Handle
4-1		Quick Release Nose 1/8
4-2		Captive Thumb Screw M5
4-3		Detachable Nose
4-4		O-ring #7141.8mm
4-5		60 Mesh Filter
4-6		O-ring #6K3.5mm
4-7		Plunger
4-8		O-ring
4-9		Spring #1211.8mm
4-10	FZBRAUK	Trigger Handle
4-11	FZBRAUK	Dual-Fort In-line Injector Spray Gun Assembly
4-12		O-ring #33.5x2mm
4-13		Teflon Washer
4-14		Packing Screw
4-15		Lock Washer
4-16		Lock Nut
4-17		Mid Air Line Seal Plug
4-18		Tube connector #6
4-19		Spring guard w/locking nut
5	FZRAUL	Housing Handle
5-1	FZRAUL	Screw M8x12
6		Wand Clips
6-1		Screw M3x10
7		Upper Housing
7-1		Lower Housing
7-2		Rubber Grommet
7-3		Screw M4x10
8	FZRAUM	18V NiMH Pump
9		3-Way Connector
10		Muffler
11		Switch
12	FZMATA	FlowZone Adapter
12-1	FZMATA	Interchangeable Battery Holder Adapter
13	FZAEH	Battery
14		Threaded Rod
15		Nut M4
16	FZRALN	Rubber Foot Bumpers
17	FZRAUD	Coiled Tubing
17-1	FZRAUD	Spring Guard
18		Tube #6-4
19	FZRALP	Check Valve
20		Tube Clip
21		Tank
21-1	FZRAUG	Quick Release Nose #6
21-2	FZRAUG	Tank Assembly
21-3	FZRAUG	Hexagonal Screw
		2-Way Connector



22	FZRAUR	Tank Strainer
23		Tank Lid
23-1	FZRAUR	Tank Lid Gasket
23-2	FZRAUR	Tank Lid Assembly
23-3	FZRAUR	Tank Pressure Gauge (30 psi)
23-2	FZRAUR	Tank Pressure Release Valve
23-3	FZRAUR	Tank Pressure Gauge (30 psi)
23-4	FZRAUR	Tank Pressure Release Valve
24		Wire
25	FZAAIR	Bosch Adapter
25-1	FZAAIR	Interchangeable Battery Holder Adapter
25-2	FZAAIR	Hexbit/Mixbit Adapter
26	FZRAIV	Shoulder Strap Assembly
	FZRAIV	Injectosol Screw & Maintenance Kit
	FZRAIV	Injectosol Spray Gun Repair Kit
	FZRAIV	Diaphragm, Metal Head, Rubber Gasket x 2

FZPATU



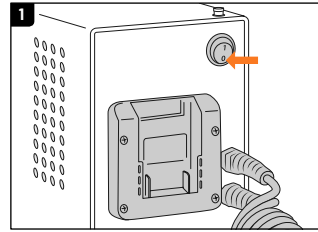
## WHAT'S INSIDE

For part numbers and replacement parts / accessories please see pages 8 & 21.

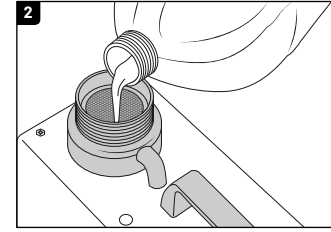
#	Name	#	Name	#	Name
1	Pressure Gauge	7	Stainless-Steel Spray Wand	13	DeWalt® / Milwaukee® QuickSwap™ Adapter
2	Pressure Relief Valve	8	Stainless-Steel Nozzle	14	Bosch® QuickSwap™ Adapter
3	Tank Lid	9	Carrying Strap		
4	Injection Spray Gun	10	18V/5.2Ah Battery Pack		
5	Twin-Bonded Hose	11	21V/2.5A Charger		
6	Carrying Handle	12	Makita® QuickSwap™ Adapter		

# GETTING STARTED

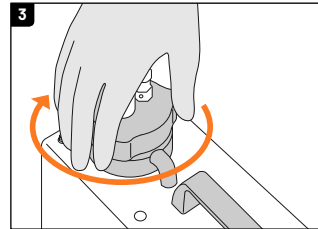
## Equipment Setup



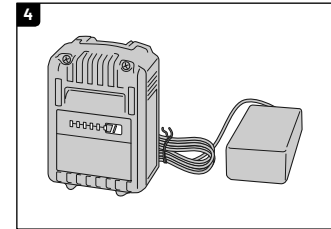
Make sure the battery (10) is removed and the INJECTOSOL™ power switch is in the OFF position.



Remove the tank lid (3) and fill the tank with approved ULV chemicals. Make sure to leave approximately one inch of space under the inner collar; do not completely fill.



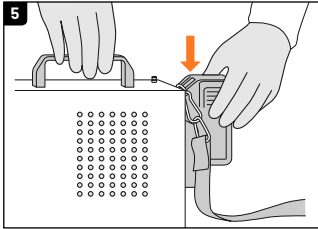
Secure the tank lid and ensure it is tightened and seated properly.



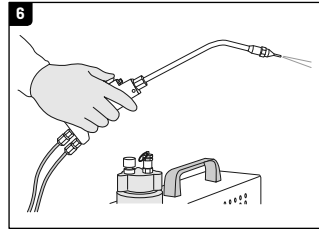
Fully charge the battery using the included charger (11) before the first operation. If using a third party battery, go to page 14.

**NOTE:** The aerosol injector may have residual water inside upon opening. This is normal and is due to quality testing every unit undergoes before leaving the factory.

FZPATU



Insert a charged battery into the battery holster.



Before turning the unit on, hold down on the trigger of the injection spray gun (4) until a steady stream of chemical comes out. This process usually takes a few seconds.

# OPERATION

## Preparing to spray

While each PCO will have their own technique, for best results, follow the directions listed in this manual.

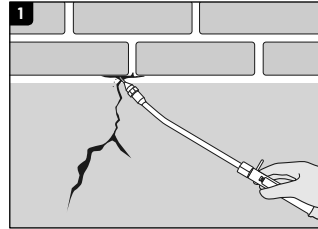
Harborage areas can be classified as internal or external:

### External Harborage Areas

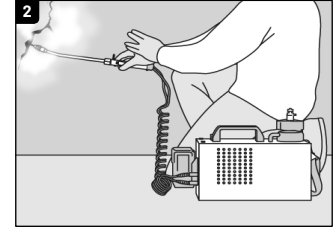
- Stoves, ovens, other kitchen equipment
- Appliances
- Shelving, wood work cracks and crevices
- Dry goods, empty food containers
- Motors, refrigerators, freezers

### Internal Harborage Areas

- Wall voids
- Ceilings



To begin treatment, point the stainless-steel precision nozzle tip (8) into the target area.



Squeeze the trigger and apply 1-2 second bursts of chemical making sure to treat all cracks & crevices.

**CAUTION:** Be careful when treating around electrical junction boxes, outlets, fuse boxes, etc. Injuries from electrical shock can be fatal. **Do NOT allow nozzle tip to contact live connections.**

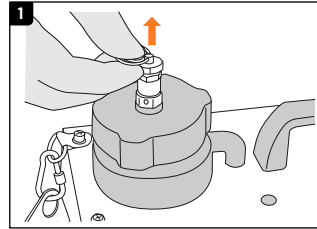
## AFTERCARE

### Equipment shut down

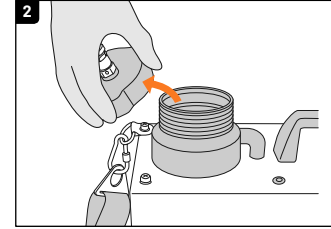
When finished with the INJECTOSOL™, always release pressure from the tank.

For best results, follow these steps after each use of the INJECTOSOL™.

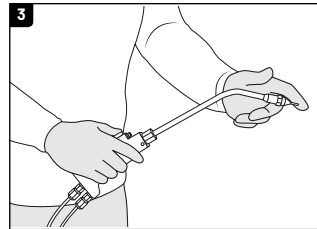
**CAUTION:** Do not squeeze the trigger while the tank is pressurized even if the unit is not ON. The pressurized tank will allow chemical to spray out of the tip causing possible contamination.



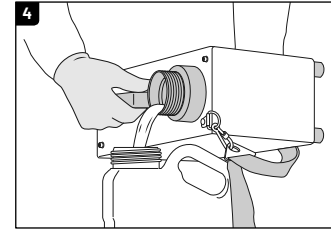
Turn the unit OFF. Depress the remaining air from the the tank by releasing the pressure relief valve (2) on the tank lid.



Twist the tank lid and remove it. Then, turn the INJECTOSOL™ back ON.



Place a gloved finger over the nozzle tip and activate the trigger for 4-5 seconds. This will drain any liquid in the wand and hose back into the tank.



With the chemical returned to the tank, empty the tank into a storage container.

## QUICKSWAP™

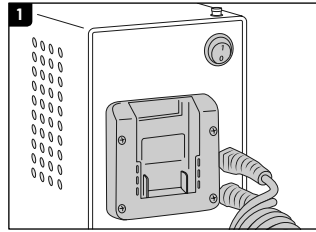
### Changing out battery adapters

The QuickSwap™ adapters allow the INJECTOSOL™ to be powered by battery packs from FlowZone®, DeWalt®, Milwaukee®, Makita®, and Bosch®.

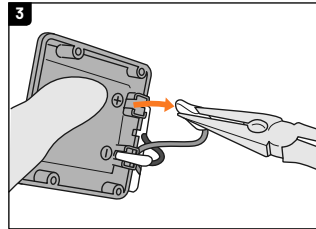
The adapters can be swapped out in a few minutes by following the instructions to the right.

**WARNING:** It is crucial to pay attention to the terminals when connecting a new adapter. To prevent damage, always connect the **red wire** to the **(+) terminal** and the **black wire** to the **(-) terminal**. The terminals use different sized male spade connectors. *Do not force a connector into the wrong terminal.* Incorrect installation could damage the unit and void the warranty.

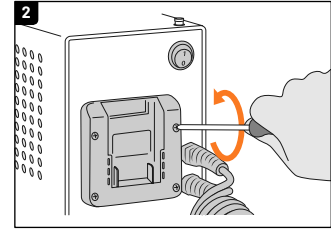
Tools: Phillips head screwdriver.



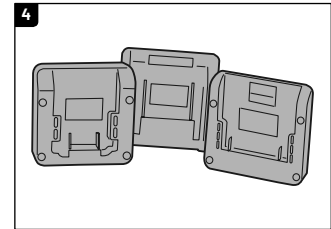
With the unit off, remove the battery to reveal the QuickSwap™ adapter.



Using pliers, gently pinch the locking tabs on each spade connector and disconnect them from the terminals. You may have to slide the rubber protectors off of the connectors.

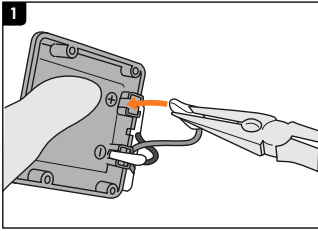


Use a Phillips head screwdriver to remove the four screws securing the installed QuickSwap™ adapter. Turn the adapter around to reveal the wires.

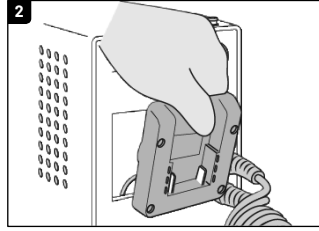


Select a battery adapter to use. Each adapter will have the brand(s) it is compatible with on the label.

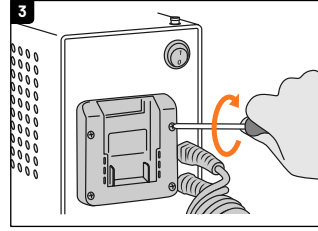
FZPATU



1 Connect the red wire to the positive (+) terminal and the black wire to the (-) terminal. Slide the rubber protectors back into place.



2 Align the battery adapter to the unit while tucking the wires behind.



3 Use the four screws to secure the battery adapter to the unit.

# MAINTENANCE

## Caring for your aerosol injector

Regular scheduled maintenance will increase the life of the INJECTOSOL™.

Certain maintenance steps should be performed daily while others can be performed monthly. Carefully read over the following to ensure the performance and durability of the aerosol injector.

## Daily Maintenance

- Keep the INJECTOSOL™ clean; do not allow deposits of chemicals or other residue to collect and dry inside the tank.
- When storing, always purge the liquid out of the unit (see page 13) and make sure the power switch is OFF.
- Check the unit for any damage including cracks or leaks.

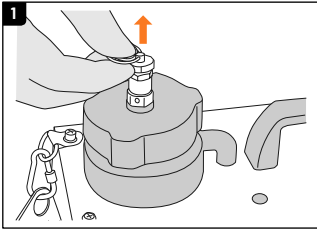
## Monthly Maintenance

- Visually check over the aerosol injector including the wand and nozzle for any damage; repair or replace as needed.
- Clean the unit with white mineral spirits (see below).
- Clean the filter and replace the o-ring if necessary (see page 17).
- Perform maintenance on the Atomizing Jet (see page 18).

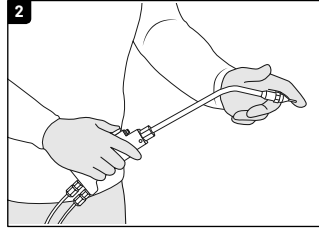
## CLEANING WITH WHITE MINERAL SPIRITS

1. Add a small amount of mineral spirits to the tank.
2. Turn the unit ON and allow it to pressurize.
3. Once the unit is pressurized, turn it OFF.
4. Squeeze the trigger and allow the mineral spirits to spray out of the nozzle into a safe area or container.
5. Once the aerosol injector has been flushed out, dispose of the mineral spirits properly according to the manufacturer's instructions.

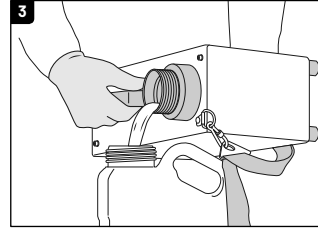
## FILTER CLEANING & O-RING REPLACEMENT Tools: flat head screwdriver.



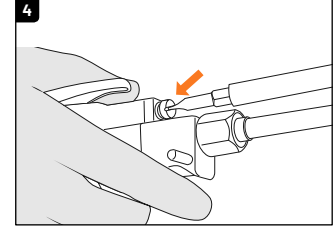
With the unit OFF, release the pressure in the tank. Then, loosen or remove the tank lid.



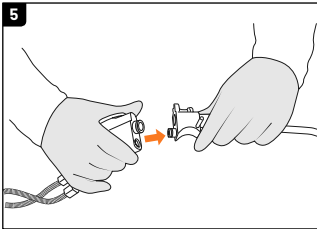
Turn the unit ON and place a gloved finger over the nozzle tip. Squeeze the trigger and hold for a few seconds.



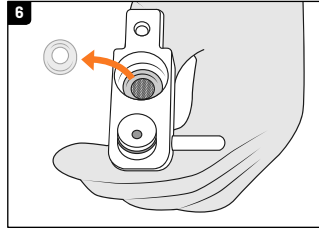
Once the liquid has been purged into the tank, safely empty the tank into a separate container.



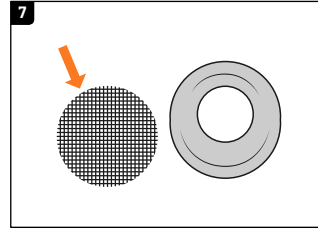
Locate the thumb screw on the spray gun handle and remove it using a flathead screwdriver.



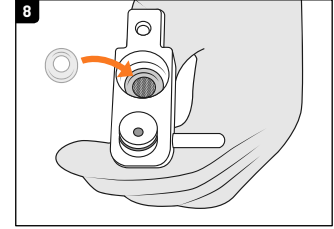
Detach the front wand attachment from the main spray gun body by pulling them apart.



Locate the o-ring inside the front wand attachment. Remove the o-ring to reveal the filter.

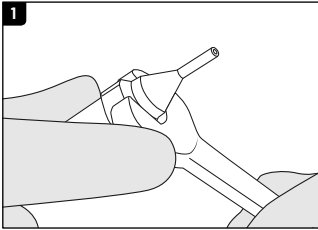


Check the filter for wear, debris, or build up. Clean or replace it as necessary.

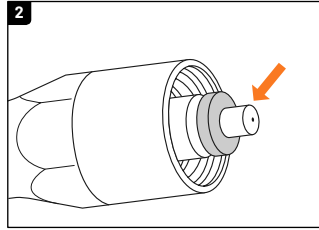


Re-insert or replace the o-ring to complete the necessary maintenance. Reassemble the spray gun.

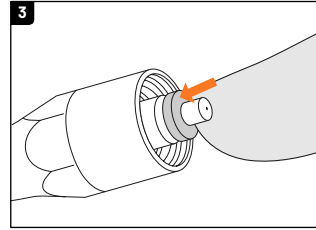
## BRASS ATOMIZATION JET MAINTENANCE Tools: 9/16-in. wrench, needle nose pliers (optional).



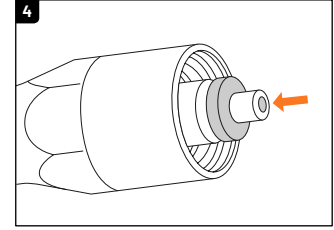
Using a 9/16-in. wrench, loosen and remove the nozzle tip from the spray wand.



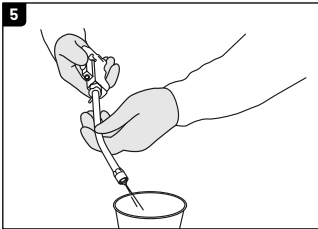
With the nozzle tip removed, the brass atomization jet should be revealed.



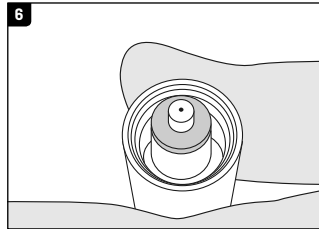
Push down on the orange quick-connect collar to release the atomization jet. Remove using needle nose pliers or your fingers.



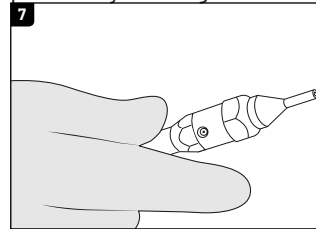
If it needs to be cleaned out, flip and re-insert the atomization jet with the larger opening facing out.



With the unit OFF, activate the trigger until liquid comes out through the atomization jet; clearing any debris.



Situate the atomizing jet correctly back into the quick-connect fitting. Make sure it is inserted all the way with the smaller opening facing out.



Secure the nozzle tip back onto the main wand.

# TROUBLESHOOTING

Below are basic troubleshooting approaches. If this does not solve your issue, please reach out to the Support Team through the methods below:

**email:** [support@wessol.com](mailto:support@wessol.com)

**tel:** +1 803-339-2500

<b>Problem</b>	<b>Possible Cause(s)</b>	<b>Solution</b>
Unit will not run when turned ON.	No power / dead battery.	Charge the battery. If the battery will not charge, test the charger or contact Support for a replacement if under warranty.
	Defective power switch.	Check the power switch and replace if necessary.
Unit has low pressure.	Pressure regulator is not set properly.	Check and adjust the pressure regulator.
	There is an air leak.	Check: tank lid, pressure release valve, and coiled tubing for holes. Replace if necessary.
	Defective pressure gauge.	Check the pressure gauge and replace if necessary.
	Defective diaphragm pump.	Replace the diaphragm pump.
Unit is at pressure but will not spray properly.	Chemical level is low.	Check the tank and refill if necessary.
	Air lock.	See page 11 to purge air from unit.

## TROUBLESHOOTING CONT.

Problem	Possible Cause(s)	Solution
Unit is at pressure but will not spray properly.	The atomization jet is clogged.	Check, clean, and replace if necessary. See page 18 for instructions.
	The stainless-steel nozzle tip is damaged.	Thoroughly check the nozzle tip and replace if necessary.
	The coiled tubing is clogged or damaged.	Check for clogs and replace if necessary.
The spray is uneven.	Air is present in the hose/liquid.	See page 11 to purge air from unit.
	Damaged or defective o-ring.	Replace the o-ring in detachable nose of spray handle. See page 17 for instructions.
The spray will not stop.	Air is present in the hose/liquid.	See page 11 to purge air from unit.
	Damaged or defective o-ring.	Replace the o-ring in detachable nose of spray handle. See page 17 for instructions.

ACCESSORIES & PARTS



**FZRAUK**  
Injection Spray  
Gun Assembly



**FZRAUV**  
Shoulder Strap



**FZRAUM**  
Disphragm Pump



**FARAUT**  
Pressure Gauge



**FZRAUG**  
Stainless-Steel  
Injection  
Nozzle Assembly



**FZAAEM**  
Li-Ion TRI-ZONE™  
18V/5.2Ah  
Battery Pack



**FZRAUP**  
Check Valve



**FZRAUU**  
Pressure  
Relief Valve



**FZRAUJ**  
Quick-Release  
Atomization Kit



**FZAAEL**  
TRI-ZONE™  
21V/2.5A  
Battery Charger



**FZRAUR**  
Tank Strainer



**FZRAUL**  
Housing Handle



**FZRAUH**  
Brass  
Atomization Jet



**FZAATR**  
QuickSwap™  
Battery  
Adapter Kit



**FZRAUS**  
Tank Lid Assembly



**FZRAUN**  
Rubber  
Foot Bumpers



**FZRAUI**  
Stainless-Steel  
Injection  
Wand Assembly



**FZRAUO**  
Twin-Bonded  
Polyurethane  
Tubing Assembly



**FZRAUQ**  
Tank Assembly

Accessories and replacement parts can be purchased at your preferred distributor or online at [fzspray.com](http://fzspray.com).

# WARRANTY

## WARRANTY COVERAGE

WESSOL, LLC warrants to the original purchaser that the FlowZone® product will function as intended under normal use and consistent maintenance, subject to certain limitations and exclusions. At the discretion of WESSOL, LLC, we will repair or replace any parts found to be defective in material or workmanship without charge, apart from shipping and handling costs, during the covered warranty period.

## WARRANTY PERIOD

The warranty period will begin from the date of retail purchase and exist for one (1) year, regardless of when the unit is placed in service. The warranty period is not extended if we opt to repair or replace the product in question.

## WARRANTY CLAIMS

WESSOL, LLC reserves the right to require the return of the defective product, proof of purchase, and established product registration to file a claim under this warranty.

## PRODUCT REGISTRATION

All sprayers purchased from FlowZone® or an authorized distributor must be registered online to validate the warranty and allow for warranty claim processing. Sprayers can be registered at [fzspray.com/pages/register](https://fzspray.com/pages/register).

To activate the warranty on your sprayer, register it at [fzspray.com/pages/register](https://fzspray.com/pages/register). If the product fails to function as intended **DO NOT RETURN IT TO THE STORE**. To view the complete warranty or submit a claim, visit [fzspray.com/pages/warranty](https://fzspray.com/pages/warranty).

## EXCLUSIONS AND LIMITATIONS

WESSOL, LLC only warrants products purchased from authorized distributors. Products purchased from unauthorized resellers or distributors are not subject to warranty services.

The limited warranty does not cover damages, loss, or injury resulting from transportation, storage, accident, improper use, neglect, modifications, normal wear, or operation not in accordance with the instruction manual. WESSOL, LLC reserves the right to change the design or specifications of any product without obligation to modify previously produced units.

ANY IMPLIED WARRANTIES, INCLUDING THE IMPLIED WARRANTY OF MERCHANTABILITY AND FITNESS FOR CONSUMER USE, ARE LIMITED TO THE DURATION SPECIFIED ABOVE. WESSOL, LLC'S LIABILITY IS LIMITED SOLELY TO THE REPAIR OR REPLACEMENT OF THE NON-FUNCTIONING PRODUCT OR PART. WESSOL, LLC EXCLUDES LIABILITY UNDER THIS WARRANTY FOR ANY AND ALL INCIDENTAL AND CONSEQUENTIAL LOSS OR DAMAGE.

In no event shall WESSOL, LLC be liable for any incidental, special, consequential or punitive damages, or for any costs, attorney fees, expenses, losses or delays alleged to be as a consequence of any damage to, failure of, or defect in any product including, but not limited to, any claims for loss of profits.

Some states do not allow limitations on how long an implied warranty lasts, or the exclusion or limitation of incidental or consequential damages, so these limitations or exclusions may not apply to you. This warranty gives you specific legal rights and you may have other rights which vary from state to state.



[fzspray.com](http://fzspray.com)

[spraysquad@fzspray.com](mailto:spraysquad@fzspray.com)

CONNECT WITH US:



[@FZSprayer](https://www.instagram.com/FZSprayer)



[@FZSpray](https://www.facebook.com/FZSpray)



[@FlowZoneSprayer](https://www.youtube.com/FlowZoneSprayer)