

## Leading Solution for Preventive *Pythium* Control

Subdue Maxx® fungicide provides systemic protection against *Pythium* blight, *Pythium* damping-off and yellow tuft (downy mildew). Its efficacy and long residual of up to 21 days make Subdue Maxx an excellent choice as part of an agronomic disease management program.

### Strong Systemic and Contact Activity

Subdue Maxx stops disease growth and prevents the development of disease within the plant. With its systemic activity, it is:

- Absorbed into the leaves and stems where it cannot be washed off by rain
- Absorbed by the roots and translocated throughout the plant

Subdue Maxx has contact activity. Product remains on the surface of the soil and is absorbed into soil particles and organic matter where it controls pathogens.

### Highly Effective Class of Chemistry

Subdue Maxx belongs to a group of fungicides called phenylamides, which have been rigorously tested and are widely used. It is formulated as a micro-emulsion concentrate, providing excellent tank mix compatibility and stability.

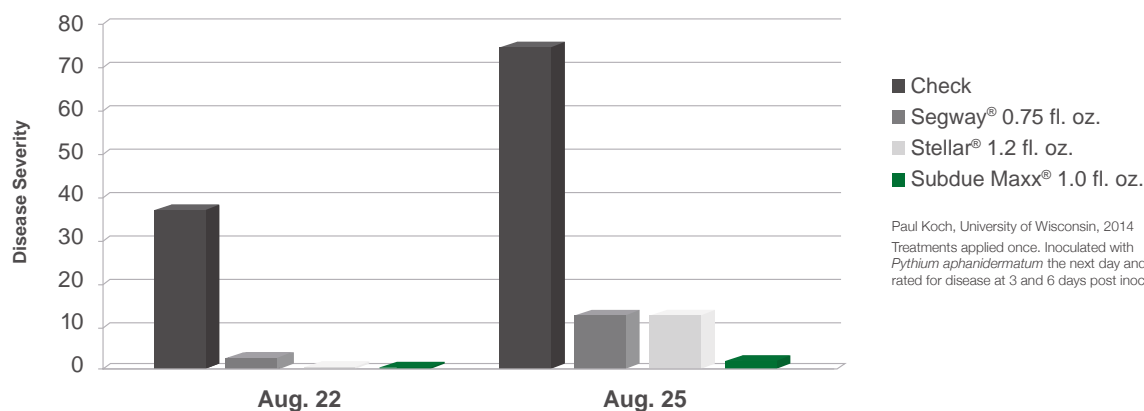
### Optimal Preventive Disease Control

Subdue Maxx provides outstanding control when applied preventively as conditions become favorable for *Pythium* development. The first application should be made when temperatures range from 68°F - 86°F and relative humidity is approximately 90%.

The benefits of preventive applications of Subdue Maxx include:

- **Enhanced turf quality:** Preventive control preserves and enhances turf quality. Once turf has been infected with *Pythium*, the infected tiller usually dies and needs to be replaced with another plant.
- **Economical:** Preventive applications are typically more efficient, since curative applications require higher rates at shorter intervals to gain control of the disease. The preventive rate of Subdue Maxx is **0.5 oz. in 1–5 gallons of water/1,000 ft²**.
- **Excellent disease control:** With both systemic and contact activity, Subdue Maxx is able to stop disease from further germination and will control what is already there. It offers root protection as its solubility penetrates the soil for great root density.

### Evolution of *Pythium* Blight Control



## Curative Measures for *Pythium*

If applied when *Pythium* is first noticed in hot spots or in locations such as low, wet areas, Subdue Maxx will help prevent the spread of mycelial growth to healthy plant tissues. However, it is recommended to treat those areas with a product containing *etridiazole* and then apply Subdue Maxx over the entire area.

In low pressure areas, consider applying a combination of Subdue Maxx and Heritage® fungicide, since it is a challenge to differentiate brown patch mycelia from *Pythium* mycelia in the early stages of infection.

## Recommended Tank Mix Partners

Subdue Maxx is an ideal tank mix partner for control of *Pythium* and other key turf diseases prevalent under similar conditions.

### Greens:

Tank Mix	*Subdue Maxx 1 fl. oz. + Daconil Action™ 3.5 fl. oz. + Appear® 6 fl. oz.	*Subdue Maxx 1 fl. oz. + Daconil Action 3.5 fl. oz. + Appear 6 fl. oz. + Heritage Action™ 0.2 oz.
Diseases Controlled	<i>Pythium</i> blight, dollar spot and leaf spot	<i>Pythium</i> blight, dollar spot, leaf spot, brown patch, anthracnose, <i>Pythium</i> root rot and, as part of a preventive program, <i>Pythium</i> root dysfunction.

### Fairways:

Tank Mix	*Subdue Maxx 1 fl. oz. + Daconil Action 2 fl. oz. + Heritage Action 0.2 oz.
Diseases Controlled	<i>Pythium</i> blight, <i>Pythium</i> root rot, dollar spot, leaf spot and gray leaf spot

\*Rates are per 1000 ft<sup>2</sup>

To learn more about Subdue Maxx, please visit [GreenCastOnline.com/SubdueMaxx](http://GreenCastOnline.com/SubdueMaxx).



/SyngentaTurf



syngenta®

Photos are either the property of Syngenta or used under agreement.

©2016 Syngenta. **Important: Always read and follow label instructions. Some products may not be registered for sale or use in all states or counties. Please check with your state or local Extension Service to ensure registration status.** Appear®, Daconil Action™, GreenCast®, Heritage®, Heritage Action™, Subdue Maxx®, the Purpose Icon, the Alliance Frame and the Syngenta logo are trademarks of a Syngenta Group Company. Segway® is a registered trademark of FMC Corporation. Stellar® is a registered trademark of Valent U.S.A. Corporation. All other trademarks used herein are the property of their respective company.