

## Series 1500

- Lawn Care • Pest Control • Pressure Washing
- Agriculture • Steam Cleaning

### To handle single 3/8" through 5/8" I.D. hose.

- Lightweight, compact reels designed for long lengths of hose in manual and power rewind.
- Direct crank rewind is permanently attached.
- Chain and sprocket drive powered by electric, hydraulic or compressed air motor.
- Manual reels include cam-lock drag brake, spring actuated pin lock.
- Standard inlet: 90° ball bearing swivel joint, 1/2" female NPT threads.
- Standard outlet: 1/2" female NPT threads.
- Standard pressures to 3000 psi (207 bar), available up to 10,000 psi (690 bar) – must specify.
- Temperatures from +20°F to +400°F (-7°C to +204°C).
- Rollers and roller mounting brackets are accessory items. Specify roller position.



Electric Rewind  
Standard configuration shown



### Optional External Mounting Brackets

Part No. 9906.0027.  
Add 2-1/2" to the X dimensions shown in the chart.

### PARTS DRAWING – ISO 90 (POWER); ISO 179 (MANUAL)

Model Number <small>For power rewind see Note 5</small>	Hose Capacity of Reel feet m				Approx. Weight Crank Rewind lb. kg <small>see Note 3</small>			Reel Dimensions*** in. mm						
	I.D. in. mm	3/8 10	1/2 13	5/8 16	NET	UPS/ FedEx SHIP Wt.	Freight SHIP Wt.	A	B	E CRANK	E POWER	F CRANK	F POWER	X
	O.D. in. mm	3/4 19	7/8 22	1 25										
<b>1514-17-18</b>		<b>125</b>	<b>75</b>	<b>50</b>	<b>27</b>	<b>65*</b>	<b>62</b>	<b>11</b>	<b>6</b>	<b>16.5</b>	<b>19</b>	<b>19.25</b>	<b>16.5</b>	<b>9.5</b>
		38	23	15	12	30	28	279	152	419	483	489	419	241
<b>1520-17-18</b>		<b>275</b>	<b>175</b>	<b>125</b>	<b>29</b>	<b>80*</b>	<b>64</b>	<b>17</b>	<b>12</b>	<b>16.5</b>	<b>19</b>	<b>25.25</b>	<b>22.5</b>	<b>15.5</b>
		84	53	38	13	36	29	432	305	419	483	641	572	394
<b>1526-17-18</b>		<b>400</b>	<b>300</b>	<b>200</b>	<b>31</b>	<b>98*</b>	<b>66</b>	<b>23</b>	<b>18</b>	<b>16.5</b>	<b>19</b>	<b>31.25</b>	<b>28.5</b>	<b>21.5</b>
		122	91	61	14	45	30	584	457	419	483	794	724	546
<b>1530-17-18</b>		<b>500</b>	<b>375</b>	<b>275</b>	<b>33</b>	<b>110*</b>	<b>68</b>	<b>27</b>	<b>22</b>	<b>16.5</b>	<b>19</b>	<b>25.25</b>	<b>32.5</b>	<b>25.5</b>
		152	114	84	15	50	31	686	559	419	483	895	826	648
<b>1536-17-18</b>		–	<b>475</b>	<b>350</b>	<b>35</b>	<b>129*</b>	<b>70</b>	<b>33</b>	<b>28</b>	<b>16.5</b>	<b>19</b>	<b>41.25</b>	<b>38.5</b>	<b>31.5</b>
		–	145	107	16	59	32	838	711	419	483	1048	978	800

#### Notes:

- Specifications subject to change.
- Upon request, reels can be supplied with drum lengths other than shown.
- Weights shown in chart are for crank rewind models. ADD these amounts for power rewind models (does not apply to FedEx or UPS):

	Net lbs/kg	Ship lbs/kg
<b>Electric</b>	<b>18/8.2</b>	<b>18/8.2</b>
<b>Hydraulic</b>	<b>15/6.8</b>	<b>15/6.8</b>
<b>Air</b>	<b>15/6.8</b>	<b>15/6.8</b>

- Dimension "F" is the overall length of standard model reels.

- When ordering power rewind models, prefix model number with:

**A** = Air Rewind –  
Supplied with control valve and 18" air hose.

**E** = Electric Rewind –  
12v and 24v DC rewind reels are supplied with switch and solenoid; 115v AC rewind reels are not supplied with switch but can be ordered separately.

**HD** = Hydraulic Rewind –  
Not supplied with control valve.

- Manual rewind available in RT or LB configurations only.

- Finish:** Refer to page 3.

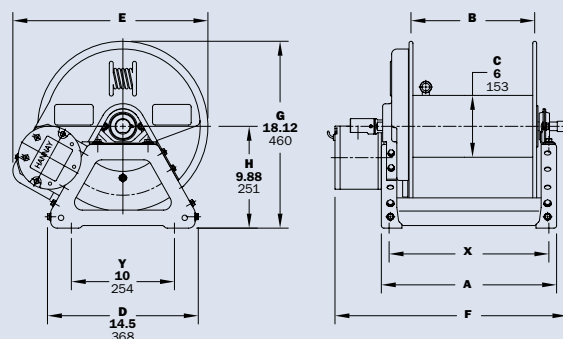
- Be sure to check dimensions and weights prior to ordering.**

- Some roller options may prohibit the use of our molded chain guard.

**NOTICE:** A flexible connector must be used between the inlet pipe and the inlet swivel joint.

\* Dimensional weight applies when shipped as a parcel package (via FedEx or UPS Ground).

\*\*\* X, Y indicate mounting holes. See page 5.



Electric rewind shown