



PEST CONTROL

ACE-jet

SYSTEMIC INSECTICIDE FOR MICRO INFUSION®

Broad spectrum pest control for use with the Arborjet injection systems in the management of specific insect pests of forests, trees, landscape ornamentals and interior plantscapes. Effective against a range of moths, caterpillars, aphids, adelgids, flies, and others. ACE-jet is applied when insects are present, and it will eventually metabolize into phosphorous and sulfur providing a beneficial plant health response as well as addressing a broad range of insects.

Active Ingredient

Acephate	
[O,S-Dimethyl Acetyl Phosphoramidothioate]	97.4%
Other Ingredients	2.6%
Total	100.0%

"I treated several lindens with ACE-jet for Japanese beetles and my customer wrote me a letter. She was so pleased and described the results as "astonishing." Thank you Arborjet for helping me be successful with my customers. You guys are top notch!"

~ Jeff Hiel, Tree Savers
New Market, Maryland

Now available in single packets or cases of 20



ACE-jet is effective for:

Leaf chewing insects including Caterpillars, Japanese Beetles, Pine Tip Moth, Winter Moth, Gypsy Moth, Eastern Tent Caterpillars, Fall Cankerworm, Fall Webworm, piercing-sucking insects such as Adelgids, Aphids, Scale, Boxelder Bugs and chewing and mining insects.

USE

ACE-jet (acephate) insect control delivers the highest level of active acephate compared to other acephate injectable products. ACE-jet is 97% acephate granular in a 15 gram packet. Each 15 gram packet is mixed with 100 mL of water, then micro-injected or micro-infused into the tree. By mixing ACE-jet with water right before injection, ACE-jet becomes the most effective and quickest traveling acephate product for trees.

ACE-jet is applied directly into the vascular tissue of the tree in a tree compatible formulation. The water mixed with ACE-jet allows for quick uptake, quick distribution, and quick results.

ACTIVE INGREDIENT

The active ingredient is Acephate. Acephate has been widely used for years with excellent results for many applications. ACE-jet's unique mix and apply method makes it the fastest and most effective for trees.

PEST MANAGEMENT

Leaf chewing insects including Caterpillars, Japanese Beetles, Pine Tip Moth, Winter Moth, Gypsy Moth, Eastern Tent Caterpillars, Fall Cankerworm, Fall Webworm, piercing-sucking insects such as Adelgids (including Hemlock Woolly Adelgid), Aphids, Scale, Boxelder Bugs and chewing and mining insects such as EAB, Leafminers, Sawflies, Birch Leafminers and many others.

RESEARCH AND DATA

Using ACE-jet with the Arborjet Tree I.V. or QUIK-jet® device will deliver similar results to those seen below. ACE-jet protected this Linden from defoliation by the Winter Moth, and will work the same on other trees being threatened by caterpillars.

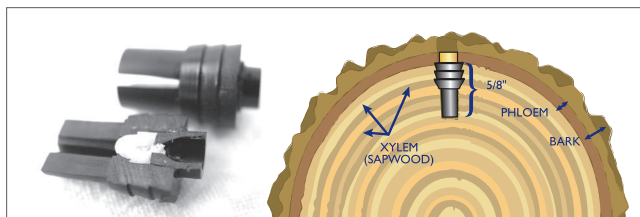
TREE INFESTED WITH CATERPILLARS



TREE TREATED WITH ACE-jet



ARBORPLUG™ TECHNOLOGY



Arborplugs™ are set into the tree, and a needle is inserted through the internal rubber septum. Arborjet's products are quickly delivered through the Arborplug. Arborplug users are guaranteed to have the most accurate, effective, and the safest tree injection experience.

©2011 Arborjet, Inc., 99 Blueberry Hill Rd. Woburn MA 01801. QUIK-jet® and Micro Infusion® are registered trademarks of Arborjet, Inc. Arborplug™ is a trademark of Arborjet, Inc.

ARBORJET INJECTION SYSTEMS

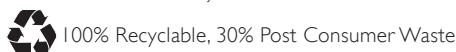


TREE I.V.



QUIK-jet

Arborjet's formulations are applied using the TREE I.V. or QUIK-jet® device. The QUIK-jet user rapidly injects formulations through a single needle at 1-5mL per trigger push. The TREE I.V. user has several one liter TREE I.V. bottle with 4-8 needles allowing high volume multiple injection site uptake while treating several trees simultaneously.



(781)-935-9070 • Visit us on the web today at www.arborjet.com

99 Blueberry Hill Road, Woburn, MA 01801 ARBORJET, Inc. All Rights Reserved 2011

ARBORjet
Revolutionary Plant Health Solutions