



Subject: **417-18L Battery-operated Backpack Sprayer** **Silent operation and no harmful emissions**

Designed for a variety of spraying tasks, including enclosed spaces such as greenhouses and office buildings when extended spraying applications are required. Ideal for spraying pesticides, herbicides, and for general spraying.

- Free of emissions, whisper-quiet
- 60" nylon-reinforced hose provides extended reach and increased durability
- 4.5 gal transparent tank made from durable UV-resistant high-density polyethylene (HDPE)
- Powerful 12 V pump with two-step toggle switch. Low 36 psi, high 62 psi
- Recharges in less than 3 hours
- Equipped with a comfortable padded backpack support frame with wide padded shoulder straps



INDUSTRIAL



Sealers

Apply Water-proofing Sealants



Degreasers

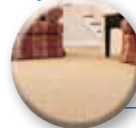
Remove Grease and Tough Stains



Cleaners

Clean and Prep Worksite Surfaces

COMMERCIAL



Cleaners

Pre-treat Traffic Lanes



Heavy-Duty Cleaners

Remove Soap Scum



Disinfectants

Kill Bacteria

GROUNDS



Fungicides

Eliminate Fungi



Insecticides

Control Pests



Fertilizers

Feed and Maintain Lawns



417-18L Battery-operated Backpack Sprayer



- 1 Unbreakable 28" spray wand w/ durable shut-off valve
- 2 Commercial quality shut-off valve
- 3 Chemical resistant gaskets and seals provide extended use with a wide variety of chemicals
- 4 Large 4.25" tank opening for easy filling and cleaning
- 5 Tank fill level markings in gallons and liters
- 6 Ergonomically shaped 4.5 gal tank made from UV-resistant HDPE with comfortable padded backpack frame and wide shoulder straps
- 7 60" long spray hose for effortless arm movement and extended reach
- 8 Robust 12 V pump fitted inside an impact-resistant enclosure; pressure and output volume adjustable with two-step toggle switch
- 9 80° Flat spray nozzle compliant with ISO standard
- 10 Maintenance free 12 V lead-gel battery, quick recharge
- 11 Drain plug

Model #	417-18L
UPC #	720343417005
Capacity	4.5 gal
Wand & Shut-off Valve	28"
Hose	60"
Nozzle	0.15 gpm 80° Flat Spray
Pump	12 V, Electric
Charger/Charging Capacity	12 V / 9Ah
Sound Level	< 70 dB(A)
2-stage Spray Pressure	36 psi / 62 psi
Weight	17 lbs
Carton Size	25" x 17.5" x 11.5"
Cubic Feet	2.9
Pallet Quantity	30



5100 Chestnut Ave.
Newport News, VA 23605
www.SoloUSA.com

Phone: (757) 245-4228
Fax: (757) 245-0800

Order Desk Phone:
(757) 245-5531