



# Wedgle® Direct-Inject™ TREE INJECTION SYSTEM

**ArborSystems**™  
The No-Drill Injection Solution

Delivers proven results with  
less chemicals compared to  
foliage spray or soil drenching

- No guarding
- No return trips
- No mixing, spilling or spraying
- No waiting for uptake
- No drilling
- No drilling damage

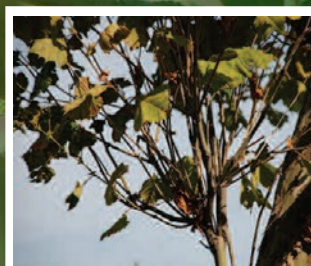
## Shepherd® Fungicide

**Prevents**

Anthracnose  
Diplodia Tip Blight  
Dutch Elm disease  
Crabapple Leaf disease  
Oak Wilt disease  
Powdery Mildew  
and other diseases



**CRABAPPLE LEAF  
DISEASE**



**ANTHRACNOSE IN  
SYCAMORE**

Single application of  
Shepherd Fungicide  
provides season-long  
suppression. Application  
in late summer/early fall  
provides protection for  
the following year.  
See label for detailed  
application instructions  
and recommendations.



**DIPLODIA TIP BLIGHT  
UNTREATED**



**DIPLODIA TIP BLIGHT  
TREATED**

Diplodia Tip Blight  
treated effectively  
using Portle®  
Injection Tips



**PORTLE INJECTION TIP**


Contact your distributor for details. • 800.698.4641 • [ArborSystems.com](http://ArborSystems.com)

# Shepherd® Fungicide

Disease	Dosage per injection site	Timing
<b>CONIFER BLIGHTS</b>		
Diplodia Tip Blight		Treatments are most effective if made during late Summer through Fall. Treatments made during one year generally carry over to the following year, providing a minimum of 12-month preventive and curative protection.
One year control	2 ml	
Two year control	4 ml	
<b>WILT DISEASES</b>		
Oak Wilt Disease	3-5 ml	Applications should be made only during the growing season; spring through late summer, providing a minimum of 12-month protection. Apply only to uninfected trees. Wilt diseases can only be prevented, not cured.
Dutch Elm Disease	5-10 ml	
<b>LEAF DISEASES IN HARDWOODS</b>		
Anthraxnose in Sycamore	2 ml	Most effective when applied in late summer to suppress/prevent leaf disease for the following year.
Powdery Mildew	1-2 ml	
Rust on selected species	1-2 ml	Trees with leaf disease symptoms can be treated to prevent recurrence for the following year.
Leaf diseases in Oaks, Crabapple, and other select species	1-2 ml	



AS-Shepherd 082012



**Treat almost any tree in 5 minutes or less!**

**Wedgle® Direct-Inject™ TREE INJECTION SYSTEM**

**Made in the USA**

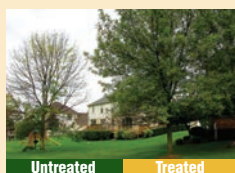
**Increase treatment effectiveness**  
The Direct-Inject process injects chemicals directly into the active zone delivering faster results.

**Treat almost any tree in five minutes or less**  
There is no waiting for uptake, no guarding, and no return trips. More trees treated in less time.

**Prevent drilling damage**  
Direct-Inject is the only trunk injection method that does not require drilling, preventing drilling damage, long-term wounding, and wasted tree energy.

**Simplify the tree-care process**  
The Direct-Inject System requires no power, no drills, and no pumps. Everything is included in one carrying case.

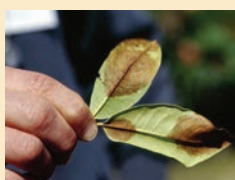
## Insecticides • Fungicides • PGRs • MicroNutrients



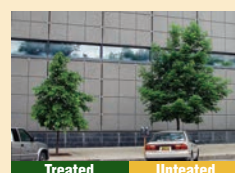
- Treat for Emerald Ash Borer, Hemlock Woolly Adelgids, Whiteflies, aphids and beetles using Pointer® Insecticide



- Control beetles, caterpillars, mites and nematodes (prevents Pine Wilt disease) using Greyhound™ Insecticide



- Effective control of Phytophthora spp. and Pythium diseases, Sudden Oak Death and Beech Decline using Whippet® Fungicide



- Reduces tree growth up to 70% over three years including stem elongation and wood formation. using Mastiff® PGR



- Relieves symptoms of iron chlorosis, manganese deficiency and drought and transplant stress using Nutriboosters®



**800.698.4641**  
**www.ArborSystems.com**  
**ArborSystems • P.O. Box 34645 • Omaha, NE 68134**