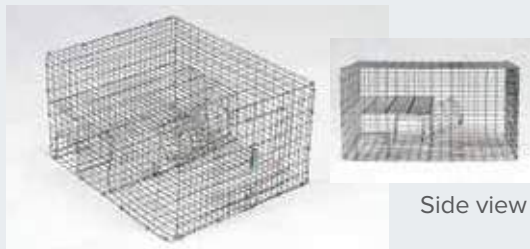


Professional Bird Traps



Side view

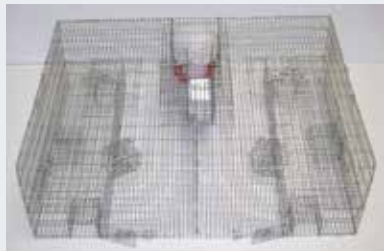
Sparrow Trap

Part #: BMP-SP2C

Two chamber
Bi-level repeating trap
Dual level design eliminates captured feeling by birds
Large capacity (can hold a large number of sparrows)
Lightweight: 4 lbs. (1.81 kg)
Dimensions: 16" x 12" x 8" (40.64 cm x 30.48 cm x 20.32 cm)

For maximum effect
lure sparrows
in with Sparrow
Charmer™

See Pg. 40



Sparrow Trap with Food and Water

Part #: BMP-SW/SSP3-WF

Two top access removal doors
Bi-level eliminates captured feeling by birds
Repeating trap
Easy access to service feed and water station
Six entry funnel doors (three per compartment)
13 lbs. (5.89 kg)
Dimensions: 36" x 24" x 10" (91.44 cm x 60.96 cm x 25.40 cm)

For maximum effect
lure sparrows
in with Sparrow
Charmer™

See Pg. 40



Collapsible Pigeon Trap

Part #: BMP-PSCP

Easily to assemble and collapses to 1" (2.54 cm) high
One door on each side
Capacity: 18+ pigeons
14 lbs. (6.35 kg)
Dimensions: 40" x 22" x 12" (101.60 cm x 55.88 cm x 30.48 cm)



Pigeon Motel

Part #: BMP-SW/SPM

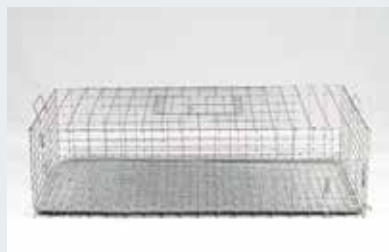
Ideal for commercial or residential use
Two one-way entry doors
Each door has a door guard
Easy to store and re-use
Portable
Capacity: 6+ birds
Lightweight 5 lbs. (2.26 kg)
Dimensions: 24" x 12" x 8" (60.96 cm x 30.48 cm x 20.32 cm)



Collapsible Pigeon Trap with Shade

Part #: BMP-SW/CP-S

Four one way entry doors - one on each side
Easily assembles and collapses to 1" (2.54 cm) high
Hinged shade screen
Capacity: 12+ birds
Lightweight 8 lbs. (3.62 kg)
Dimensions: 35" x 16" x 8" (88.90 cm x 40.64 cm x 20.32 cm)



Transporters

Medium Part #: BMP-SW/TRN-M; Large Part #: BMP-SW/TRN-L

Constructed of heavy 14- and 16-gauge welded wire
Carrier collapses to 1" tall for storage
Full wire floor with slide out galvanized flat pan
Medium Capacity: 8+ birds
Large Capacity: 25+ birds
Medium Dimensions: 24" x 12" x 9" (60.96 cm x 30.48 cm x 22.86 cm)
Large Dimensions: 36" x 16" x 9" (91.44 cm x 40.64 cm x 22.86 cm)