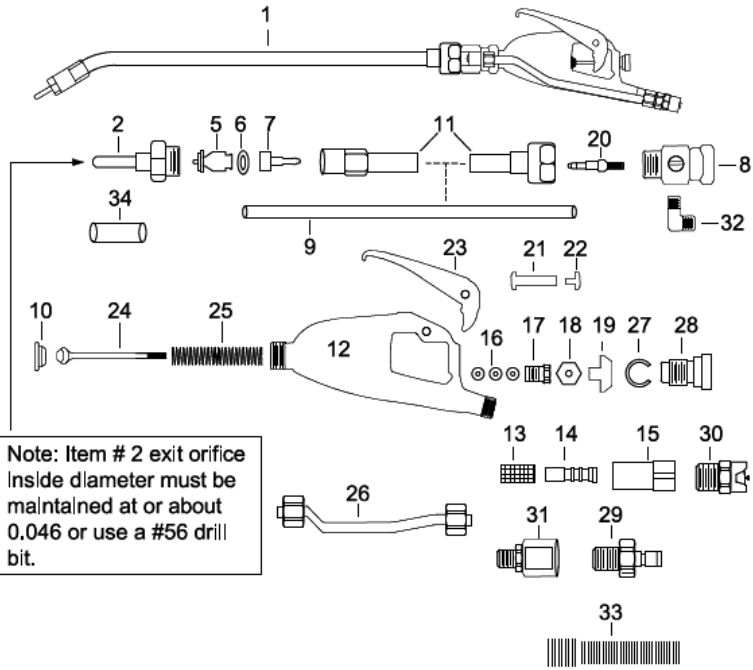
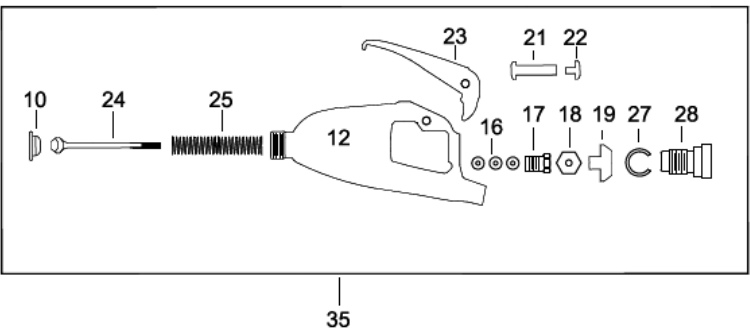


# Actisol<sup>®</sup> Wand - 12"QD or 18"QD



Note: Item # 2 exit orifice inside diameter must be maintained at or about 0.046 or use a #56 drill bit.



<b>NO.</b>	<b>ITEM</b>	<b>DESCRIPTION</b>
1	3000112QD	12" Wand Complete with Quick Disconnects
1	3000118QD	18" Wand Complete with Quick Disconnects
2	300183	Integrated Stainless Extended C & C Tip
3	30003	C & C Tip Poly Sleeve – Not Shown
5	30005	Stainless Fluid Cap
6	30006	“O” Ring for Fluid Cap
7	30007	Exit Hose Shank
8	30008	Adapter Body
9	30009-12 or 18	12" or 18" Poly Tubing for Wand
10	8010009	Teflon Seat
11	300011-12 or 18	12" or 18" Stainless Extension
12	8010011	Valve Body for Wand
13	8010013	Monel Screen 50m
14	8010014	Screen Support
15	8010015	Strainer Housing
16	8010016	Teflon Packing
17	8010017	Packing Screw
18	8010018	Lock Nut
19	8010019	Brass Nut
20	500019	Inlet Hose Shank
21	8010020	Screw Housing
22	8010021	Screw
23	8010022	Steel Trigger
24	300023	Stem Sub Assembly
25	300024	Spring Type 302-2
26	300026	Stainless Airline for Wand
27	300027	Snap Ring
28	300028	Safety Lock Screw
29	500103	1/8" NPT X Insert
30	500101	1/4" NPT X Coupling so
31	8010055	1/8" FNPT 1/4" Compression
32	8010061	1/8" NPT X 1/4" Compression Elbow
33	300076	Spring Guard for Wand
34	300093	Red Tip Protector Cap
35	8010012	Valve Body Complete