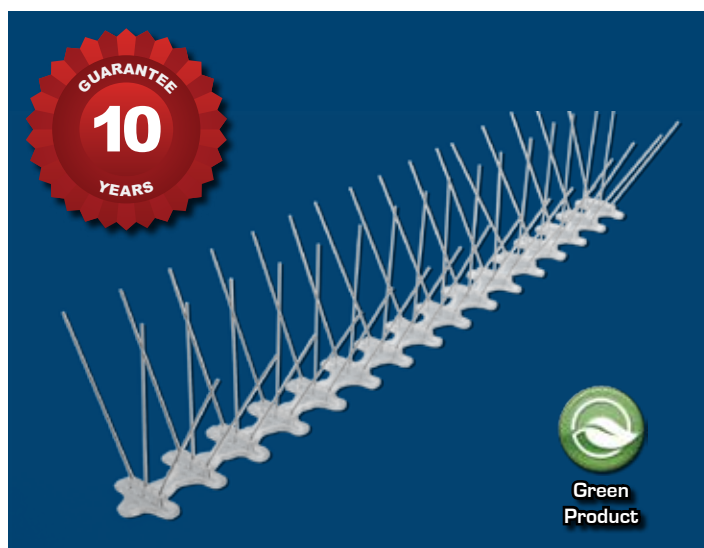




Bird Spike 2001™ - Stainless Steel Bird Spikes



Patented US6250023 US6775950

Bird Species	Pigeons, seagulls or larger birds
Where to Use	Ledges, I-beams, parapet walls, conduits, signs, flat or curved surfaces
Material	Stainless steel spikes manufactured into a U.V. protected polycarbonate base
Bird Pressure	Light to Heavy
Warranty	10 years

Bird Spike 2001™ creates an uneven surface preventing birds from landing on flat or curved surface areas encouraging them to fly to a different spot.

Standard Sizes

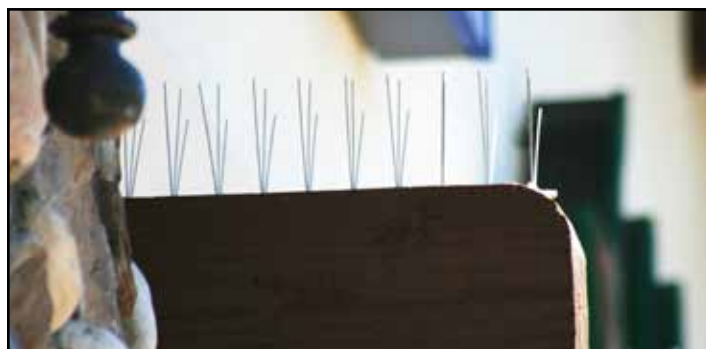
Width	1"	3"	5"	8"
Area of Coverage	1" - 2"	2" - 4"	5" - 7"	8" - 10"

Advantages & Benefits

- ▶ #1 specified steel spike by architects, contractors, and government agencies
- ▶ Humane, does not harm birds
- ▶ High-quality stainless steel pins in a UV protected polycarbonate base
- ▶ Also available in 316 Steel
- ▶ Patented "bend and crush" design ensures spikes will not fall out of base
- ▶ No-nest design. Specialty no gap spacing between bird spikes deters birds from roosting and landing
- ▶ Available in 1", 3", 5", 8" widths to accommodate the area of the surface being treated
- ▶ Virtually invisible; will fit any contour – can safely bend 360 degrees!
- ▶ Easy to install. 2' strips can be glued, screwed or tied down to any surface
- ▶ Industry leading guarantee of 10 years
- ▶ Manufactured by Bird•B•Gone® in USA



Bird Spike 2001™ installed on a parapet wall.



The spikes can be glued, screwed or tied down.



BIRD•B•GONE® Inc.

Professional Bird Control Solutions

800.392.6915 • BirdBGone.com



**Made in
the USA**



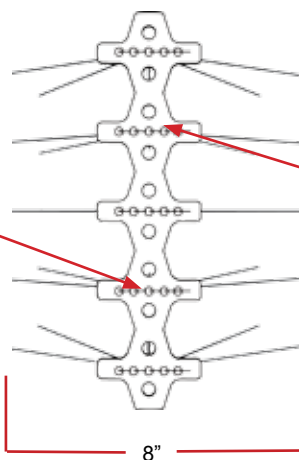
Bird Spike 2001™ - Stainless Steel Bird Spikes



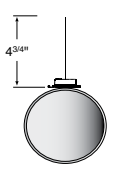
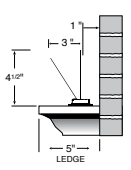
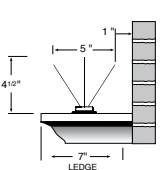
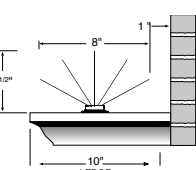
Bird Spike 2001™ installed over channel letters and parapet wall.

Underside View

Pins are permanently anchored in the base of the spike



1/4" Screw holes for screw attachment

Width	1"	3"	5"	8"
Part #	BBG2001/1	BBG2001/3	BBG2001/5	BBG2001/5
Area of Coverage	1" - 2" (2.54 cm - 5.08 cm)	2" - 4" (5.08 cm - 10.16 cm)	5" - 7" (12.70 cm - 17.78 cm)	8" - 10" (20.32 cm - 25.40 cm)
Pack Size	2' (60.96 cm) sections 50' (15.24 m) per box	2' (60.96 cm) sections 50' (15.24 m) per box	2' (60.96 cm) sections 50' (15.24 m) per box	2' (60.96 cm) sections 50' (15.24 m) per box
Installation	 <p>* Attach using common hose clamps, nylon ties and wire lashings.</p>			



Glue troughs along the base make for easy installation. Bird•B•Gone® offers construction grade adhesives.



To install: Surface should be clean and dry before installation. Select width of bird spike based on the surface to be covered leaving no more than 1" on either side. Glue, screw or tie down to the surface.



BIRD•B•GONE[®] Inc.

Professional Bird Control Solutions

800.392.6915 • BirdBGone.com



Made in the USA